



MICHIGAN MUNICIPAL LEAGUE
CONVENTION2024



Marie Wicks, MPA

City Clerk
City of East Lansing
mwicks@cityofeastlansing.com



M M L
CONV
2024

The Anatomy of an Election

The Parts, The Players, The Process

Marie Wicks, MPA
City Clerk
City of East Lansing



General Comments:



Throughout this presentation there will be three overarching focal points; Transparency, Bipartisanship and Protecting Chain of Custody throughout elections administration processes.



The objective for this presentation is for you to walk away with factual, non-partisan information regarding elections, to be confident that elections in Michigan are secure, and most importantly, for you to have confidence in the validity of the results, based on the integrity of the process.

Structure of Elections in Michigan:

STRUCTURE OF MICHIGAN ELECTIONS

1-4

Secretary of State

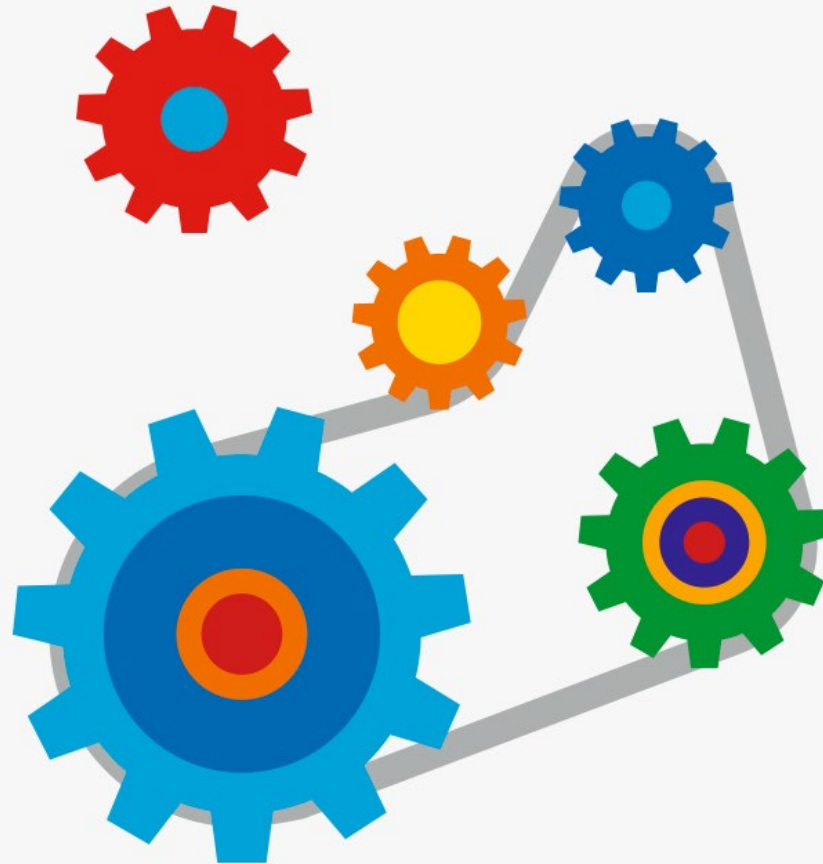
Board of State
Canvassers
Bureau of
Elections

Board of County
Canvassers
County Election
Commission
County Clerks

Local Election
Commission
Local Clerks

- One of eight states that conduct ALL elections locally (most others conduct them at the county level)
- Of those eight, Michigan is the most populated and decentralized
- More than 1,600 city and township local clerks conduct our elections
- This means the need for workers is great and that there are many eyes on the process!

1. The Parts



Procurement of Current Election Systems:

- Current equipment procured under former Secretary of State, Ruth Johnson
- 2015-2017 - The Joint Evaluation Committee (JEC) composed of Bureau of Elections (BOE) and Department of Management and Budget (DTMB), election officials (myself included), requested proposals & ultimately vetted three vendors for Michigan – Dominion, Election Systems and Software (ES&S), Hart Intercivic
- All went through rigorous testing and accreditation at the Federal and State levels by certified testing labs
- Funded by \$30 million in Help America Vote Act (HAVA) money prudently held over by past Secretaries of State, Teri Lynn Land and Ruth Johnson plus, \$10 million legislative allocation
- In 2022, SOS Benson obtained an additional \$10 million in HAVA money with matching state funds to enhance election security
- Equipment chosen county by county (83) and with each LOCAL council or board required to pass a resolution to accept the grant funding and the equipment
- Equipment rolled out statewide in 2017-2018

Secretary Johnson announces next-generation voting equipment

-- For immediate release --

Clerks now will choose which system works best locally



Secretary of State Ruth Johnson today announced the approval of contracts for new next-generation voting equipment that all Michigan voters will use over at least the next decade.

The State Administrative Board today approved 10-year contracts with three vendors for optical-scan voting systems that read and tabulate paper ballots marked by voters. Each of Michigan's 83 county clerks now will consult with the city and township clerks in their county to select one of the three vendors.

"The new equipment offers voters all the speed and convenience of the latest ballot-scanning and election-night reporting technology while at the same time featuring a good, old-fashioned paper ballot that we can always go back and look at if we need to," said Johnson, the state's chief elections official.

Tabulators:



- Two memory devices SEALED into the tabulator that tabulate results through optical scan of paper ballots
- Memory devices or “programs” are thoroughly tested in advance by local clerks
- Prompts on screen image to inform voters that their ballot has been “successfully cast” or rejected in which case a reason is provided and voter offered a new ballot
- Prints a “Zero” tape in the morning and a “Totals” tape at the close of the polls – **both are public information**
- Tabulators are NOT connected to the internet 😊

Tabulator Security:



Confidential Password

Security Key "I-button"



Numbered Plastic Seals protecting Memory Devices, Recorded in PollBook

Election Day EPB:

- Automates the paper processing of voters on Election Day – there is still a paper component for recording of Oaths, etc.
- Runs off of a secured flash drive with voter information including who has already turned in a ballot
- Not online or connected to the Tabulator
- Information from Election Day exported back into the Qualified Voter File (QVF) post-election

Early Vote Center EPB:

- Uses a web-based application requiring multi-factor authentication (a grid card, unique yubikey, unique user password) to access the voter rolls and issue ballots
- Not connected to the tabulator
- Must be able to interact with the QVF in real time to make sure voters cannot cast more than one ballot

Electronic Poll Books (EPB)



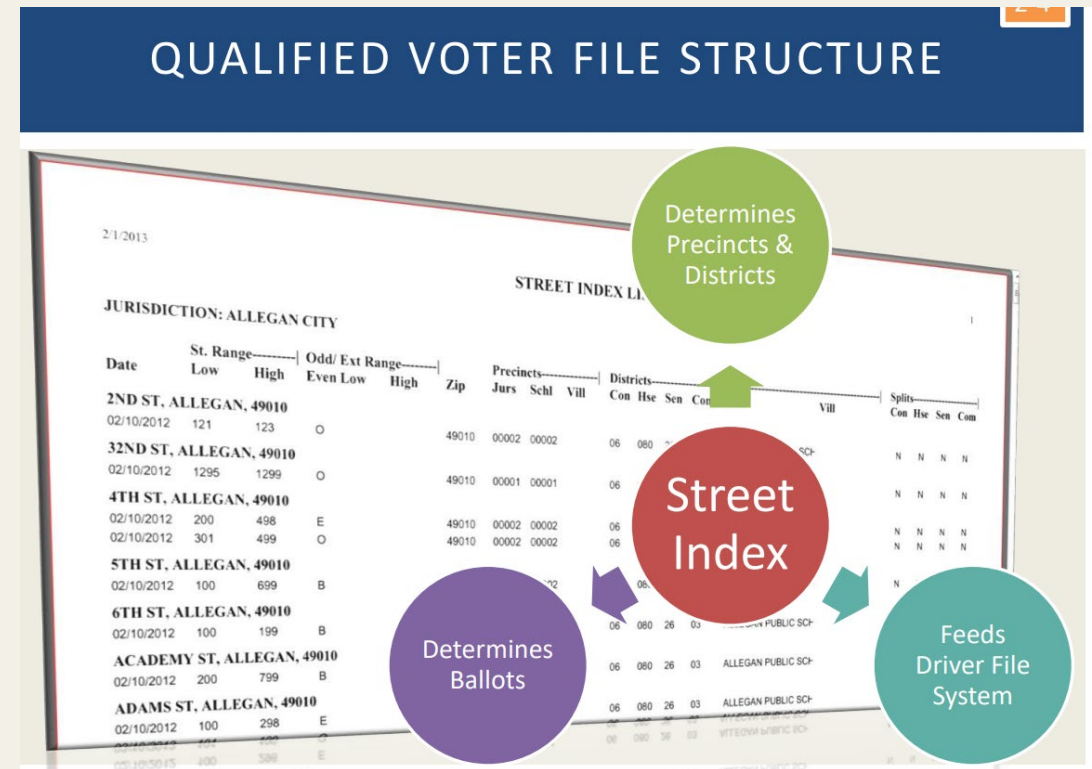
Voter Assist Terminal (VAT):

- Ballot *marking* device – anyone may use it but it enables voters with disabilities to vote independently
- Not connected to the internet or the tabulator
- Password and pass card enabled
- Prints ballot with QR code read by tabulator



Qualified Voter File (QVF) “Voter Rolls”

- Statewide database of voters based on the street index
- LOCAL clerks are responsible for keeping it updated, for example, they may cancel a voter’s registration upon “reliable” information that a person has died (family member, obituary, notice from county or state)
- Each jurisdiction only has access to its voters & it operates in real time so voters cannot register to vote or vote twice!
- Newest version has enhanced security and multi-factor authentication
- The QVF TRACKS the issuing and return of Absentee Ballots!



Paper Ballots:

- In Michigan we do have paper ballots and they're not going anywhere!
- Ballots are ordered by local clerks through their county clerk and printed in Michigan
- They are issued exclusively by LOCAL Clerks – neither the county nor Secretary of State handles ballots
- They have markings specific to each precinct called “timing marks”
- “Test Deck” is conducted to verify ballots and programs are operating properly
- Test ballots are retained under seal subject to audits, same as ballots



2. The Players



City, Township & County Clerks:

Process Oriented – Non-Partisan- Custodians of Democracy -



- Administer Elections, FOIA, manage the QVF, Public Notices, Meeting Minutes, etc.
- Your #1 source of election related information!
- Clerks operate under the Open Meetings Act – their work is public and transparent

Election Inspectors:



MCL 168.674 requires one Democrat and one Republican, and a minimum of three inspectors per precinct



Inspectors must declare a party affiliation on their application – cannot declare “independent” as this is not a recognized party (there are seven in MI)



Once appointed, the list of Election Inspectors is sent to the county party chairs for approval



County and local clerks provide training for Election Day procedures



Who are they? Your neighbors, friends, people with whom you worship and even high school students (16 & 17 year-olds make GREAT election inspectors)!

Election Day Participants

Poll Watchers:

- Any person interested in observing voting process
- Restricted to Public Area
- May not approach voters
- May not be a candidate
- May look at the pollbook at the Chairperson's discretion
- Not required to be a registered voter

Challengers:

- Appointed by political parties and organizations; must carry credentials
- Two allowed per party, only one challenger per party has authority to challenge – must declare an authority change
- May challenge a voter's qualifications to vote and election procedures
- May be expelled for being disorderly
- May be behind the voter processing tables and view pollbook and election equipment
- Must be registered to vote in Michigan

Campaigners:

- Prohibited within 100 ft. of any polling place entrance on Election Day:
 - Encouraging voters to vote for or against a candidate or issue
 - Distributing campaign materials
 - Soliciting petition signatures
 - Requesting donations. selling tickets. etc.

Don't forget:

- Challengers are allowed in AV counting boards. Must not have phones or electronics. Remain sequestered.
- Challengers in a regular polling place may come and go and use electronics to record voter information.
- Exit Pollsters must be 20 ft from exit

Notes:

	Parties – Republican and Democratic	Ballot Access – Republican and Democratic*	Parties Recognized in Michigan
Has primary ballot access		X	
Elects precinct delegates		X	
Candidates file by petition or with filing fee for certain offices		X	
Election Inspectors:			
• May seal containers	X		
• May assist voters			X
• May be appointed chairperson			X
• Must be balanced	X		
• Party must be notified of appointments	X		
• Party may challenge appointments	X		
• May duplicate ballot			X
• May be a Receiving Board member	X		
• May deliver materials to Receiving Board	X		
Challengers			X

Absent Voter Counting Boards (AVCB):

- Absentee Ballot Counting Board is composed of bipartisan inspectors
- Inspectors and other participants must take a special oath and are sequestered until close of the polls at 8pm
- Ballot is emailed to MOVE voter, must “snail” mail back
- Inspectors and other participants must take a special oath and are sequestered until close of the polls at 8pm
- Process Military and Overseas Civilian (MOVE) ballots – includes Canada
- Voters may receive multiple ballot applications but may only obtain ONE ballot

ABSENT VOTER COUNTING BOARD AFFIDAVIT

STATE OF MICHIGAN

COUNTY OF: _____

(Check one)

City Township or Village of: _____

AV Counting Board Precinct #: _____

Any person in attendance at an absent voter counting board after the processing of ballots has begun shall take and sign the following Oath and shall not leave the counting place after the tallying has begun until the polls close.

I Do Solemnly Swear, (or affirm) that I shall not communicate in any way any information relative to the processing or tallying of votes that may come to me while in this counting place until after the polls are closed.

Signature of Persons Taking Oath



Early Vote Center Election Inspectors:

- Perform the same functions as Election Day Inspectors including:
 - Checking seals on ballot containers
 - Running Zero Tapes and Status Reports
 - Processing voters including checking ID, issuing ballots, providing basic instructions to voters, providing instruction on how to insert ballots into the tabulator
 - **Note: Results totals for Early Vote Centers are not tabulated until after 8pm ON ELECTION DAY!**

Local Election Commission & Mandatory Receiving Boards:

Local Election Commission: Establishes AVCB, appoints inspectors and Receiving Board members, determines polling locations

Receiving Boards: Composed of one person from each major party

Election inspectors (one democrat and one republican) deliver supplies to the Receiving Board at the end of Election Day

Receiving Board members complete checklist to ensure recountability of precinct

Board of County Canvassers:

- This board and its deliberations are subject to the public and are notice under the Open Meetings Act!
- The job of this board is considered “ministerial” and “administrative.”

II. Duties and Composition of the Board of County Canvassers

The County Board of Canvassers plays an important role in Michigan’s electoral system. In particular, each County Board of Canvassers is responsible for:

1. Canvassing each of the county’s precincts by carefully reviewing the vote totals reported and ensuring consistency across all election forms and certificates;
2. Canvassing the county’s vote totals by summing the votes cast in all precincts in the county and reporting those results to the Board of State Canvassers and relevant local election officials;
3. Determining the results of certain local and county elections and ballot questions;
4. Managing any recounts that might occur; and
5. Physically inspecting the county’s ballot containers every four years.

3. Process; Pulling it All Together



Election Day Checks & Balances:

The law requires that at least one Democrat and one Republican staff a polling location with a minimum of three workers (MCL 168.674).

A Republican and a Democrat must perform the following duties TOGETHER:

- Opening and sealing ballot containers
- Opening the tabulator for any reason
- Transcribing Military ballots if needed
- Assisting any voter in need of assistance

- Transporting ballots, pollbooks and other paperwork to City or Township Hall
- Perform the duties of local Receiving Team which double checks seals on ballot bags and paperwork from the day

Election Day Checks and Balances Cont'd:

- Seals on tabulator memory devices secured after testing by the clerk and remain intact until the END OF ELECTION DAY.
- Seal numbers on tabulators and ballot bags are recorded in the pollbook for verification that no tampering has taken place in transport.
- The Electronic Pollbook Drive, Tabulator Memory Devices and Ballot Containers are all transported under seal to verify that no tampering has taken place.

**OPTICAL SCAN
POLL BOOK**

— FOR THE —
_____ **ELECTION**
Primary, General or Special

Held On _____, 20____ In the _____
Month and Date Year Ward/Precinct

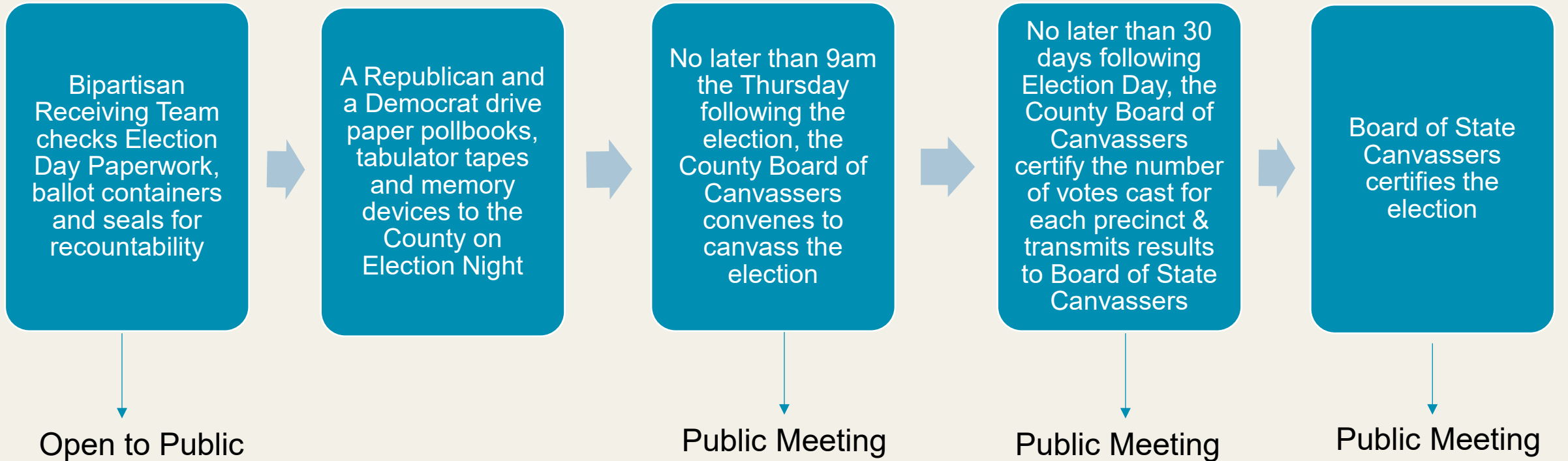
Of the _____
City, Township or Village

County of _____, State of Michigan

ELECTION INSPECTOR INFORMATION

- All inspectors must take and subscribe to the Oath of Office in the front of this Poll Book prior to assuming any duties as an inspector.
- All inspectors must complete and sign the Election Inspectors' Preparation Certificate in the front of this Poll Book.
- Record any comments or clarifications on the Remarks Pages in this Poll Book.
- Record write-in votes in the Write-In Section located in the back of this Poll Book. Do not record write-in votes cast for precinct delegate candidates at the August Primary in this Poll Book. Write-in votes cast for precinct delegate candidates are recorded in the precinct delegate statement.
- All inspectors must complete and sign the Certificate of Election Inspectors in the back of this Poll Book when completing the precinct's records after the polls close.
- Two (2) inspectors must initial all red paper seals used to seal envelopes.
- Two (2) inspectors must attest to the sealing of the ballots in an approved

Election Day and Post-Election Processes – County/State





How You Can Participate:

- Apply to work as an Election Inspector or Receiving Board Member – you may work anywhere in the state as long as you are a registered voter!
- Attend the upcoming Logic & Accuracy test in your community – it is a public meeting!
- Observe Board of County Canvassers as they canvass/certify election results.
- Follow the work of the Board of State Canvassers as they certify election results.
- Of course, Vote!!!



Fair Winds and Following Seas...

