



Bringing More Trains to More Communities

Michigan Municipal League

October 19, 2023

Derrick James, Director
Government Affairs





Quick Facts

More than 40 routes

21,400 route-miles

306 weekday trains

510 stations in 46 states, plus D.C. & Canada

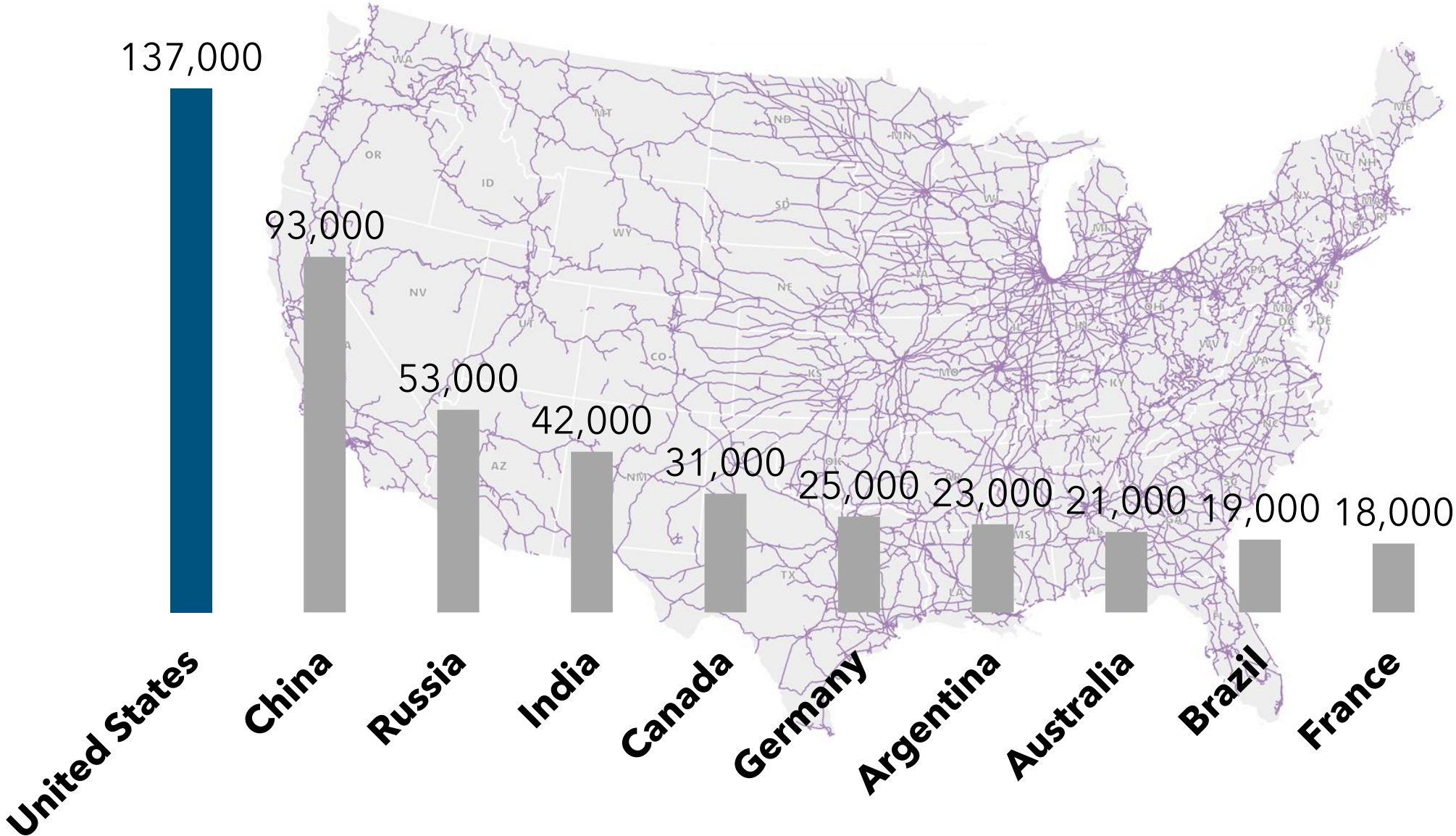
19,000+ employees

32 million riders, pre-pandemic

Ridership returns, bookings 100% of pre-pandemic levels



Miles of Rail Lines by Country



Mode Shift: "More Trains for More People"

→ 39 New routes → 25 Enhanced routes → 160 New stops → 20 million More riders → All 50 Largest metro areas served

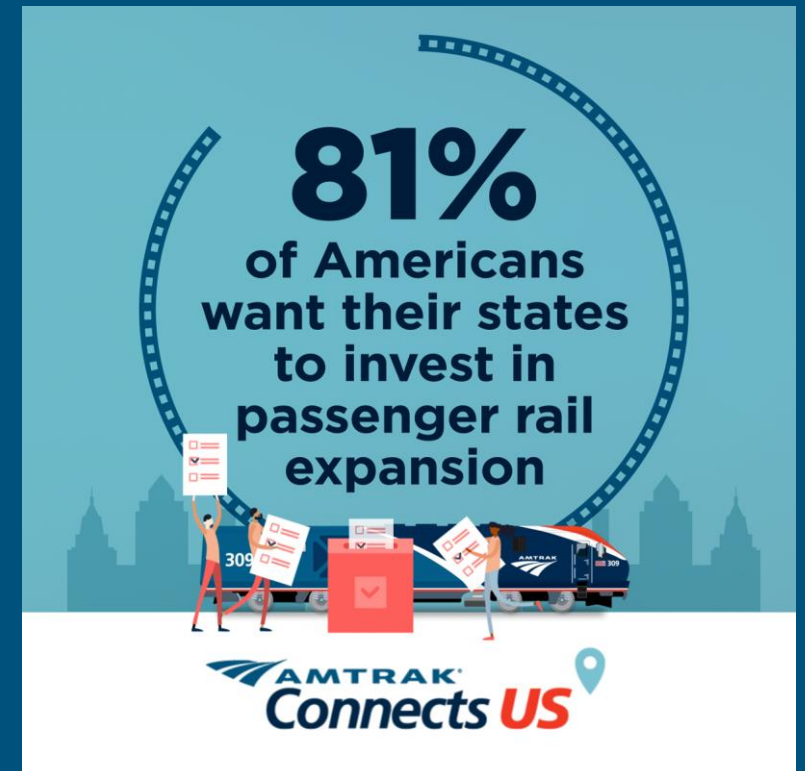


\$66B

in passenger and freight rail
Investment over 5 years



Americans Want Passenger Rail



Investing in Fleet

We're replacing 20th century fleet with modern trains to transform the customer experience:

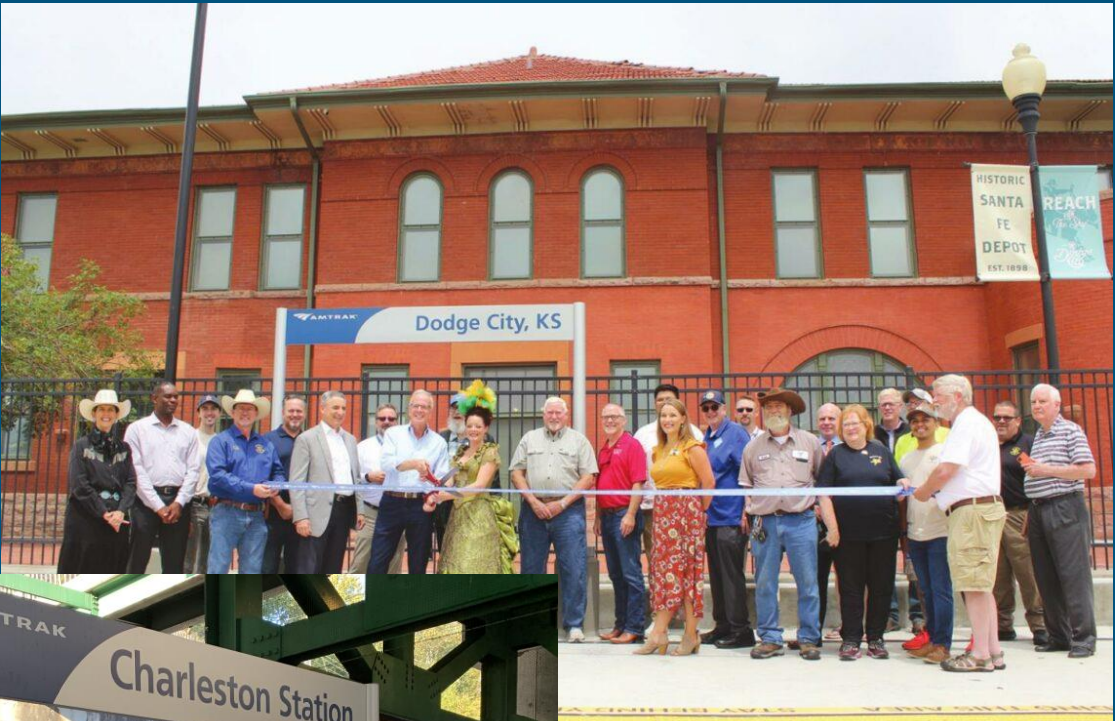
- 83 new intercity trainsets, some dual mode
- New *Acela* fleet
- State-acquired Venture cars
- Track upgrades to accommodate more and faster trains in Michigan and Illinois



Investing in Stations and Accessibility

ADA station investments benefit all our passengers

- Amtrak has invested \$800M to date, bringing 103 stations into full ADA compliance
- With \$1.2B in planned investments, we're on track to meet **100% ADA compliance by 2028** at all Amtrak-responsible stations



Investing in Sustainability



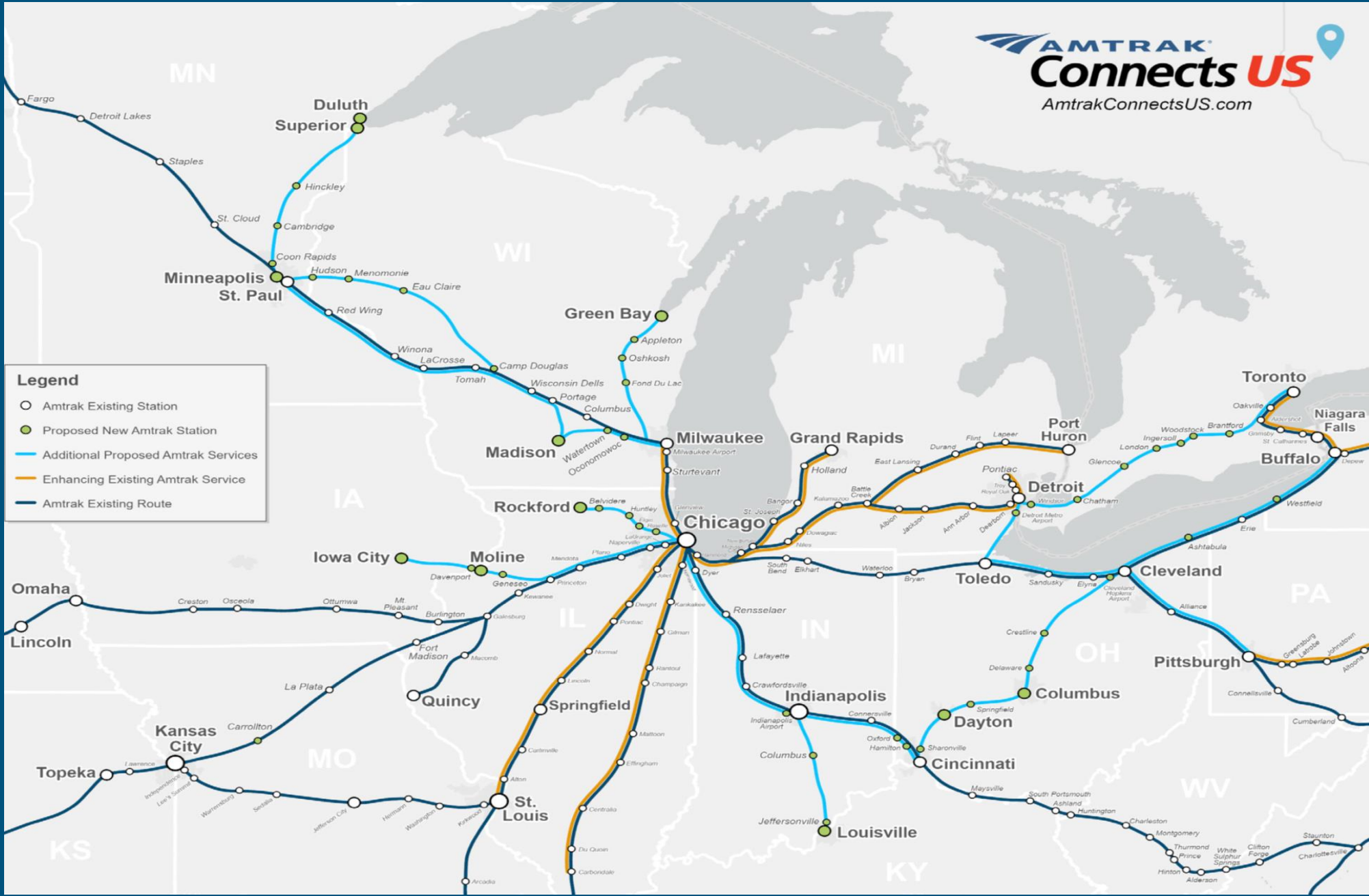
**Amtrak Pledge:
Net-Zero Greenhouse
Gas Emissions by 2045**

**Pushing the
development of zero-
emission equipment**

**Company-Wide
Resilience Program**

Legend

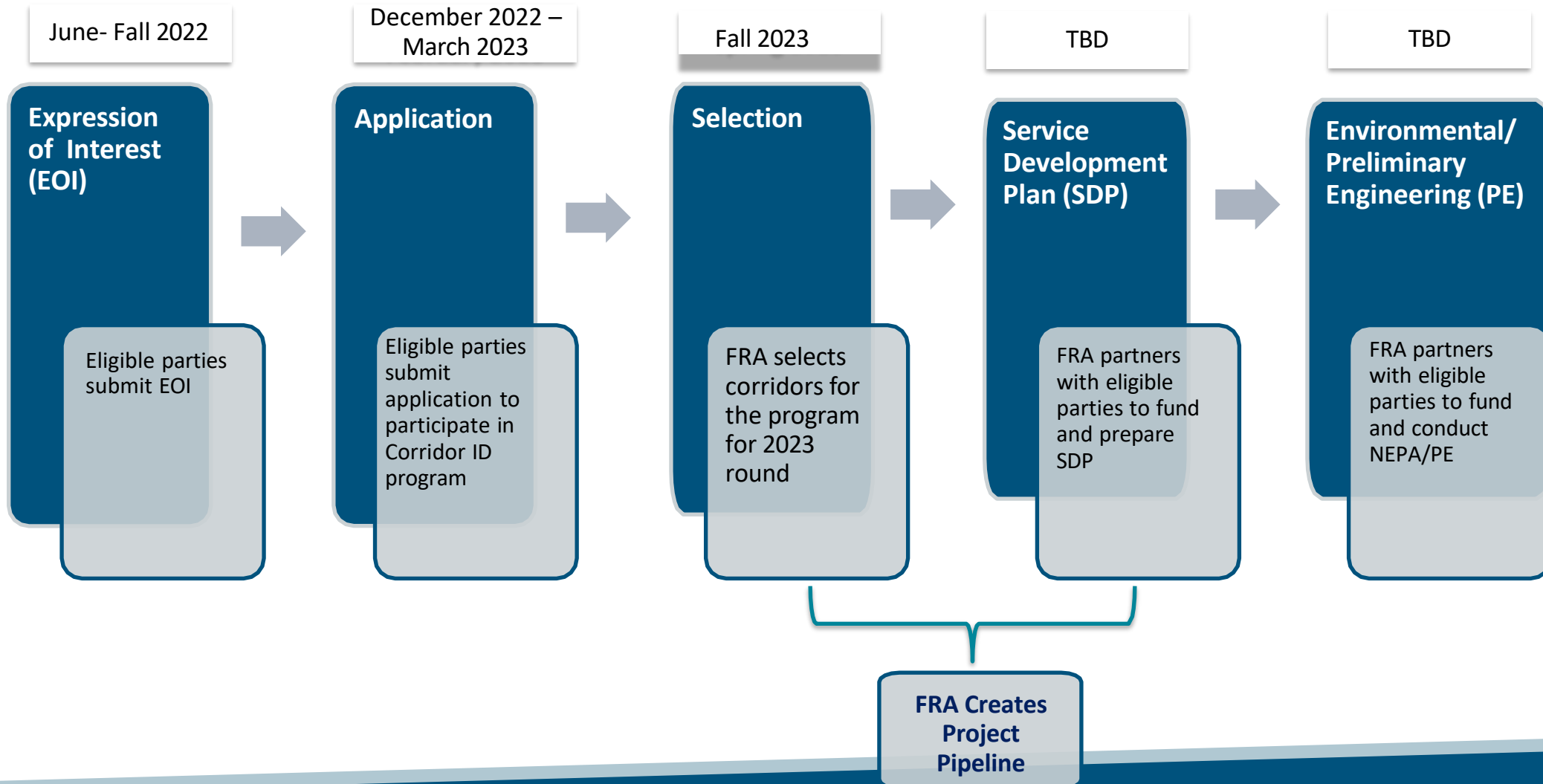
- Amtrak Existing Station
- Proposed New Amtrak Station
- Additional Proposed Amtrak Services
- Enhancing Existing Amtrak Service
- Amtrak Existing Route



Near-term Service Expansion

Route	Launch
<i>Berkshire Flyer (NYC-Western Mass.)</i>	July 8, 2022
Second NYC-Roanoke Train	July 11, 2022
Third NYC-Norfolk Train	July 11, 2022
<i>Ethan Allen</i> Burlington Ext (from NYC)	July 29, 2022
Fourth <i>Piedmont</i> Train (Charlotte-Raleigh)	July 10, 2023
Twin Cities – Milwaukee – Chicago new train	Spring 2024
Gulf Coast (NOL-Mobile)	2024

New FRA Corridor ID Program – Passenger Rail Project Pipeline for Federal Funding



1. User Benefits

Travel Time Savings

Travel Time Reliability

Travel Cost Savings

Induced Travel

2. Societal Spillover Benefits

Emissions

Safety

3. Spatial Connectivity Benefits

Regional Economic Integration

Intermodal Access to Broader Markets

Regional Equity

4. Risk Reduction Benefits

Resilience/Redundancy

Sustainable Economic Future

5. Local Land Impacts

Local Land Development

6. Operator Impact

Revenues

Life Cycle Costs

Economic Impacts of Passenger Rail Investment

States and other stakeholders are beginning to communicate the economic impacts of passenger rail

- American Public Transit Association Intercity Passenger Rail Return on Investment Study
- Two examples of states' recent economic impact analysis for passenger rail from Illinois and Missouri

Economic Impact of Passenger Rail Investment: Missouri River Runner

Connecting St. Louis and Kansas City State with 2 Daily Round-Trips

Investment

\$12M state annual
operating support



Economic Impact from operations, Amtrak business activity, and tourism

\$65M annual labor income (1,250 jobs
annually)

\$208M annual economic activity

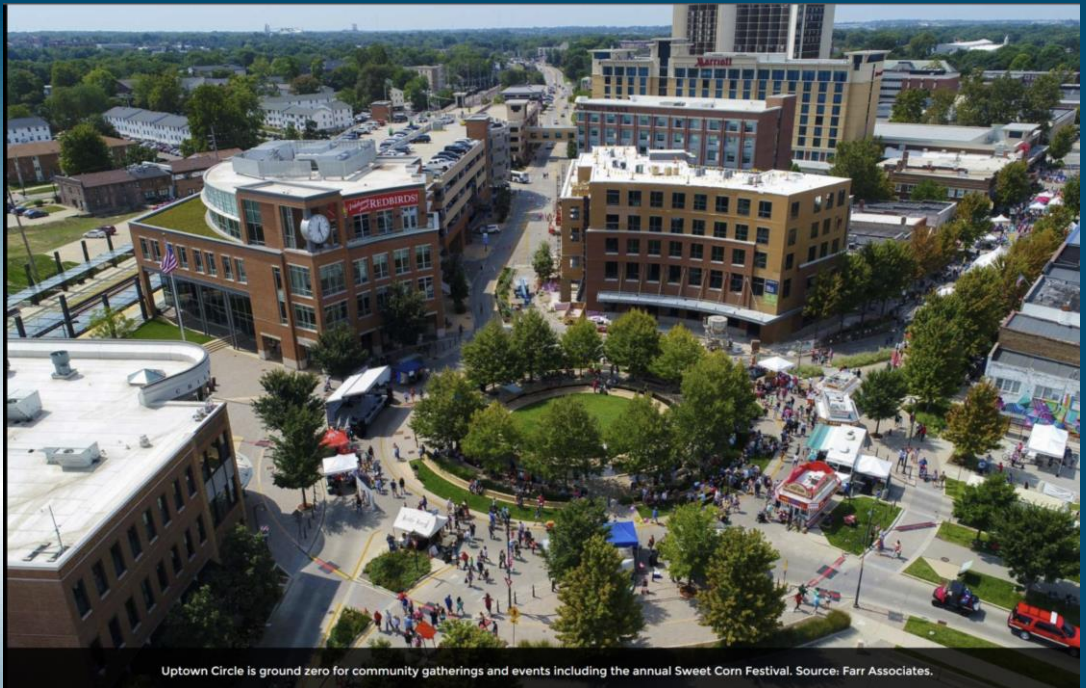
\$22M in annual tax revenue

\$28.9M: Amtrak annual spending in
Missouri

Economic Development in Station Areas: Spotlight Normal, IL

Station is the catalyst for a revived downtown

- \$45.6 million multi-modal transportation center serves Amtrak, intercity and local bus, airport shuttles and regional rail.
- Municipal offices, council chambers, a community room and 380-car parking garage.
- Financed with TIGER/ARRA, FTA, IDCEO, and local bonding.
- Award winning downtown redesign includes restoration of 18 district structures
- Spurred millions \$250 million in private sector development including Marriott and Hyatt Place Hotels, children's museum, residential, office and commercial construction



Uptown Circle is ground zero for community gatherings and events including the annual Sweet Corn Festival. Source: Farr Associates.

Economic Development in Station Areas: Spotlight Herman, MO

Wineries and German heritage tourism rely on Amtrak for 1000s of visits monthly

- Tourist destination: 19th Century river town with shops restaurants and hotels
- 23,000 pre-pandemic annual train station on/offers - 6th highest ridership in State. Population: 2,400
- Reviving wineries is feeding tourism growth, & circulating trolleys bring rail passengers
- Multiple daily departures allow day trips or overnight stays from Kansas City or St. Louis metros (both have suburban stops)
- New train to Chicago (metro 9.5 million) has increased visitor counts, helped with recovery





jamesde@amtrak.com
[@derrickamont](https://twitter.com/derrickamont)
312-502-5047

amtrakconnectsus.com
[@AmtrakConnects](https://twitter.com/AmtrakConnects)

