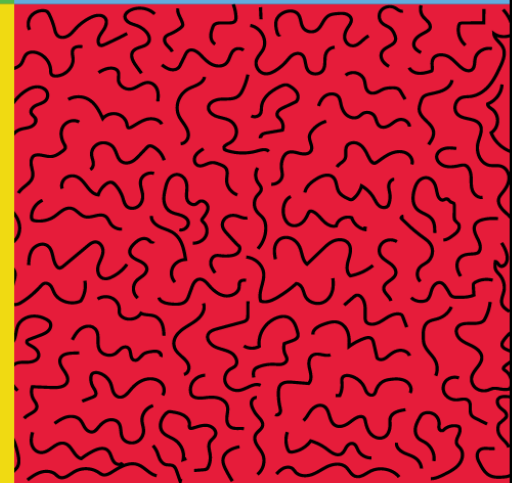
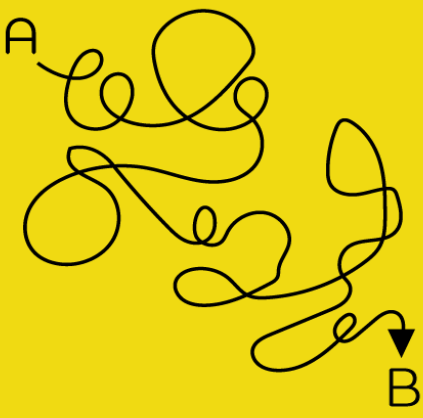
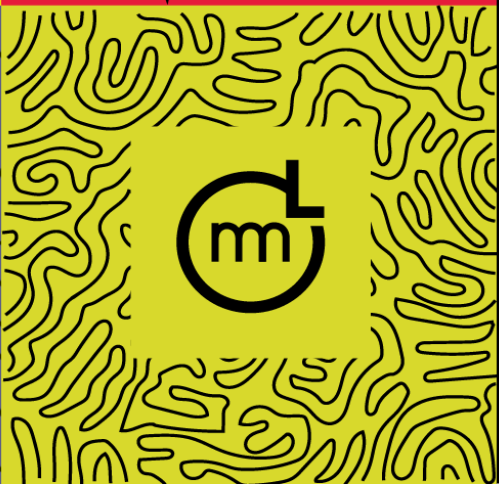


MICHIGAN MUNICIPAL LEAGUE  
**CONVENTION 2022**



**MUSKEGON, MI**

**OCT 19-21, 2022**



**#MMLCONV**



# **Creating a Municipal Climate Action Plan & Funding Opportunities**

**LeRoy Harvey**, Environmental Programs Coordinator, Meridian Township

**Julie Lyons Bricker**, LEED AP O+M, PMP, Energy & Sustainability Manager, City of Royal Oak

**Danielle Beard**, Program Coordinator, Michigan Municipal League





## **LEROY HARVEY**

**Environmental Programs Coordinator**

**Meridian Township**

LeRoy works with community teams on energy and environmental initiatives related to energy, water, recycling, wetlands, and ecology. LeRoy has a Masters Degree in Community Sustainability from Michigan State University. He has served as Director of Urban Options Energy & Environmental Demonstration House, instructor of Alternative Energy at Lansing Community College, dialogue facilitator, residential energy auditor, minister, musician, and father.



## **JULIE LYONS BRICKER**

**LEED AP O+M, PMP, Energy & Sustainability Manager**

**City of Royal Oak**

Julie Lyons Bricker is the Energy & Sustainability Manager and Grants Coordinator for the city of Royal Oak, MI. In this position she manages municipal energy and sustainability projects. Some of these projects include championing the 2020 LEED for Cities Certified designation for Royal Oak, creating the city's first greenhouse gas emissions inventory, and developing the city's first sustainability and climate action plan in 2022.



## **DANIELLE BEARD**

**Program Coordinator, Michigan Green Communities**

**Michigan Municipal League**

Danielle Beard is the Policy Research Labs special projects coordinator for the League. Prior to joining the MML, she spent the previous four years working for the City of Albion, Michigan in various roles. The most recent of which was as a project manager for the Albion Economic Development Corporation. Her experience is in community planning, economic development, grant writing, and project management.



Royal Oak, MI has earned LEED for Cities certification in recognition of its ongoing sustainability commitment.

# Agenda

- 1. Background Efforts
- 2. Leveraging Efforts and Lessons Learned
- 3. Resources
- 4. Q&A



# ROYAL OAK SUSTAINABILITY

WE'VE BEEN ENGAGED IN THIS WORK FOR YEARS...

**Leadership Buy-in**



**Started Measuring**



**Earned grant funding & More measurements**



**Leadership Commitment**



**More Measurements**



**Created the Guidebook for Implementation**



- **June 2017** - Joined National Mayors' Support of Paris Climate Agreement – Continued to sign on to additional climate pledges
- **November 2018** - Created utility tracking accounts for all municipal buildings to analyze and optimize energy waste reduction. Inventoried all existing sustainability initiatives in the city.
- **May 2019** - Awarded 2019 LEED® for Cities and Communities grant program funded by Bank of America in partnership with USGBC.
- **April 2020** - Earned the LEED® for Cities Certified designation.
- **July 2020** - City Commission adopted the Resolution Acknowledging the Climate Emergency, the expansion of the EAB's scope, and tasked staff with completing a Greenhouse Gas Emission Inventory.
- **September 2020** - Completed the first citywide greenhouse gas (GHG) emissions inventory.
- **January 2021** - the city commission approved GHG reduction goals & tasked staff to develop a community-wide sustainability plan
- **May 2022** - the city commission approved the sustainability & climate action plan (S-CAP)

# Royal Oak's Pathway to a Plan...





# 2018 GHG INVENTORY RESULTS: ENTIRE COMMUNITY\*

\*Emission sources not included:

- Food consumption
- Durable and non-durable consumer goods consumption
- Leisure travel
- Gasoline-powered yard equipment, off-road vehicles, and leakage from a/c, chillers and refrigerators for residential, commercial, and industrial (municipal was counted)
- Upstream energy sector construction and processing

CATEGORIES	FUEL OR SOURCE	MTCO <sub>2</sub> e	PERCENT
Commercial	Electricity	221,909	24.2%
Transportation	Gasoline	174,715	19%
Residential	Electricity	148,302	16.1%
Residential	Natural Gas	145,364	15.8%
Transportation	Diesel	62,586	6.8%
Industrial	Electricity	58,923	6.4%
Commercial	Natural Gas	44,394	4.8%
Electric Grid Transmission Losses		21,085	2.3%
Landfilling of Solid Waste		16,315	1.8%
Natural Gas System Leakage		6,268	0.7%
Transportation SMART		4,508	0.5%
Wastewater Treatment		4,138	0.5%
Street Lighting (commercial elec.)		3,045	0.3%
Waste Collection and Transport		2,415	0.3%
Industrial	Natural Gas	2,398	0.3%
Potable Water Supply	Pumps	1,922	0.2%
<b>TOTAL</b>		<b>918,287</b>	<b>100%</b>



# 2018 GHG INVENTORY RESULTS: MUNICIPAL OPERATIONS

CATEGORIES	MTCO <sub>2</sub> e	PERCENT
Buildings & Facilities - Electric	4,885	39.1%
Street Lights & Traffic Signals	3,045	24.4%
Buildings & Facilities - Natural Gas	1,705	13.7%
Employee Commute	1,389	11.1%
Vehicle Fleet	1,317	10.6%
Off-road Equipment	91	0.7%
Air Conditioning Fugitive Emissions	46	0.4%
<b>TOTAL</b>	<b>12,478</b>	<b>100%</b>

Municipal operations emissions = 12,478

Entire community emissions = 918,287

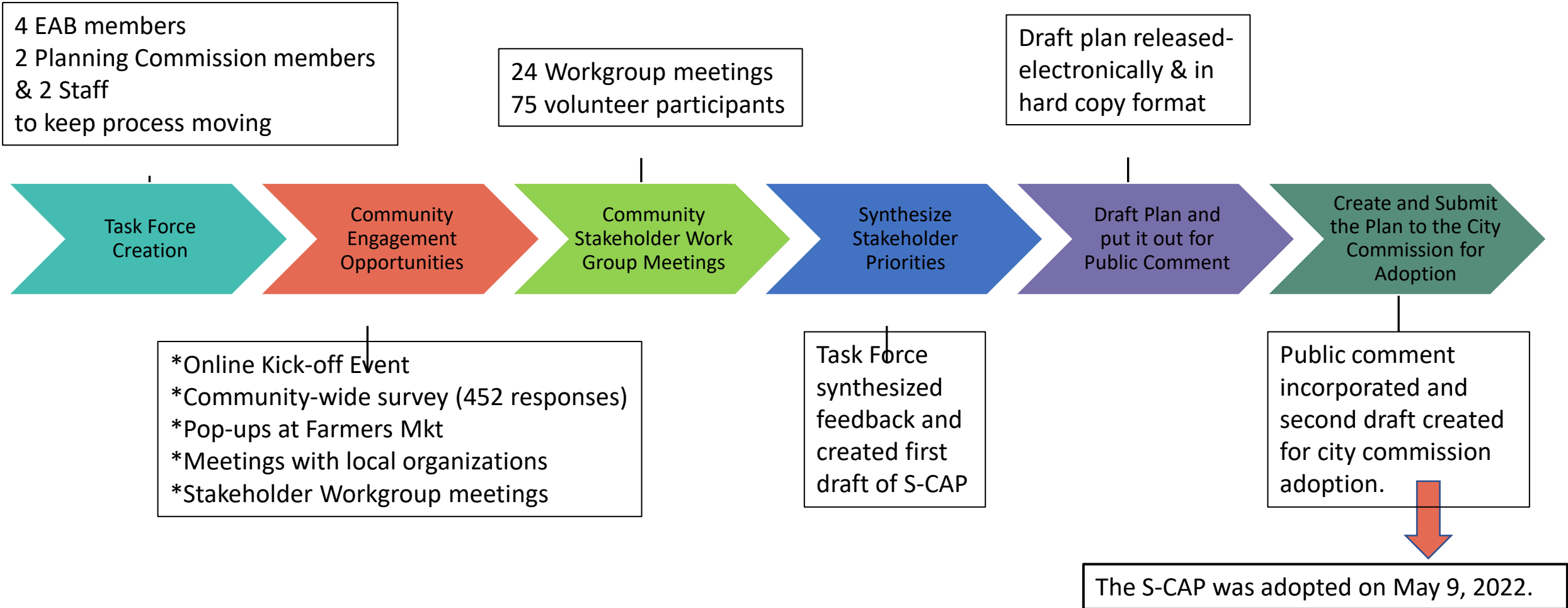
Municipal percentage = 1.4%



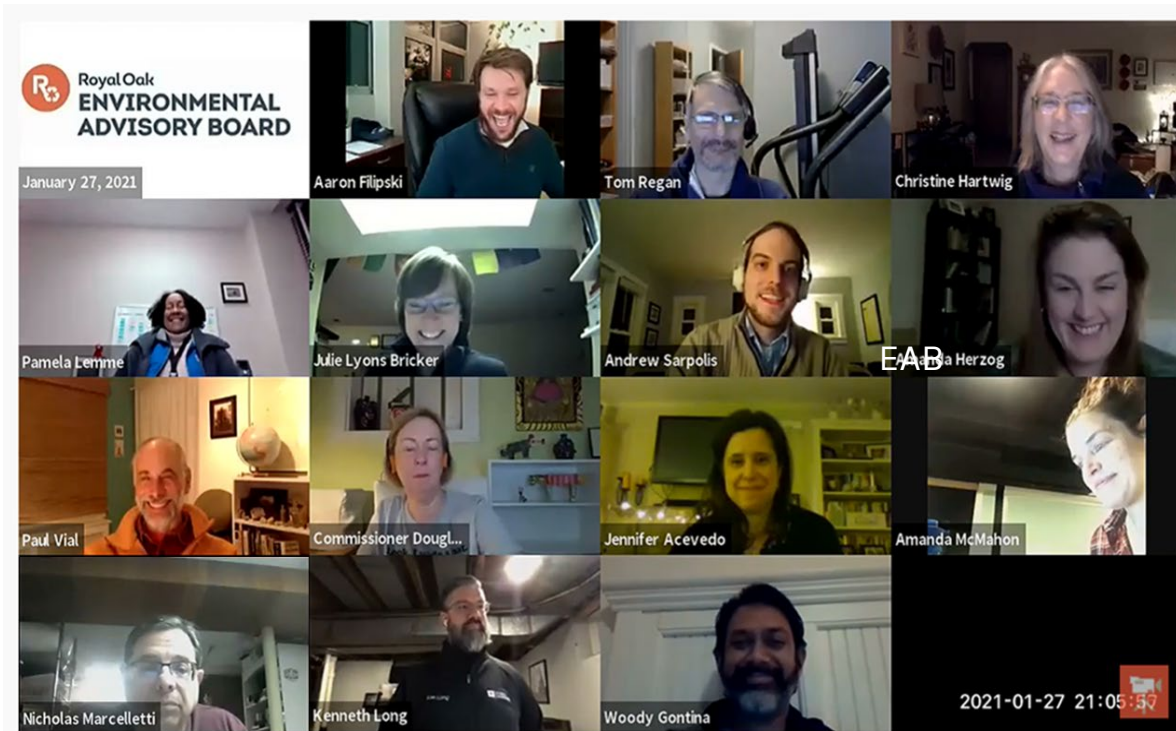
## Lesson Learned

1. City operations only has a minimal amount of impact on reducing GHG. Community stakeholders have to participate!

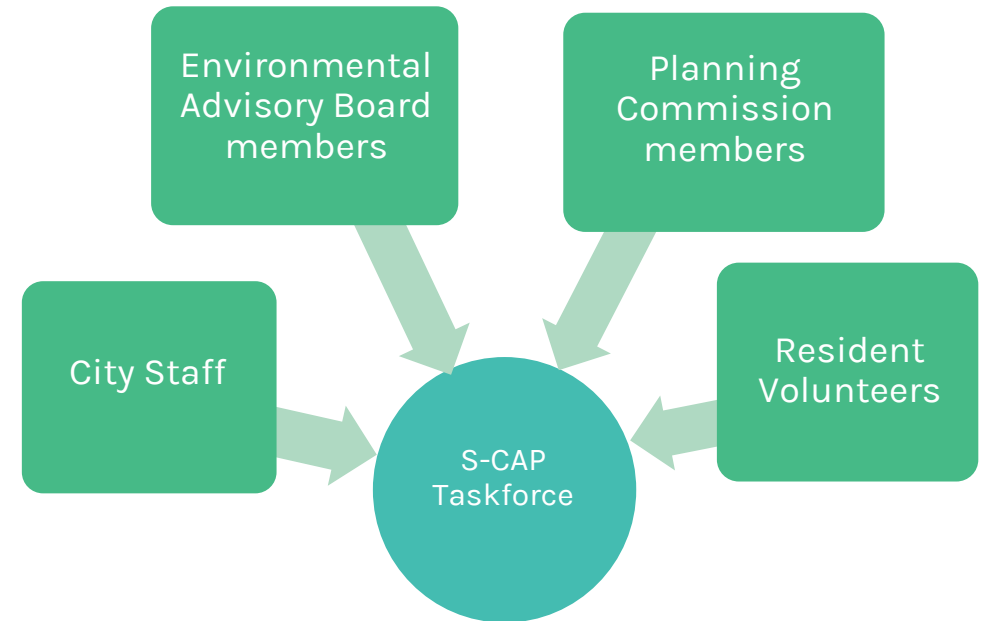
# Royal Oak's Sustainability & Climate Action Plan (S-CAP) Development Process...



# S-CAP Task Force Creation



Learn more about the environmental advisory board at: [www.romi.gov/EAB](http://www.romi.gov/EAB)



The task force's goal: using lots of stakeholder input, submit the final draft sustainability and climate action plan (S-CAP) to the city commission in May 2022.



## Lesson Learned

It is really valuable to have a volunteer environmental group as a partner and collaborator on the plan development and future sustainability initiatives

# Community Engagement Tools



5. Please rank each of the following climate-related threats facing Royal Oak in the order of most important to you, (1) being most important.

	1	2	3	4	5	6	7
Air Quality	<input type="radio"/>	<input type="radio"/>	<input type="radio"/>	<input type="radio"/>	<input type="radio"/>	<input type="radio"/>	<input type="radio"/>
Sudden rain events and flooding	<input type="radio"/>	<input type="radio"/>	<input type="radio"/>	<input type="radio"/>	<input type="radio"/>	<input type="radio"/>	<input type="radio"/>
Grid disruption	<input type="radio"/>	<input type="radio"/>	<input type="radio"/>	<input type="radio"/>	<input type="radio"/>	<input type="radio"/>	<input type="radio"/>
Extreme heat	<input type="radio"/>	<input type="radio"/>	<input type="radio"/>	<input type="radio"/>	<input type="radio"/>	<input type="radio"/>	<input type="radio"/>
Drought	<input type="radio"/>	<input type="radio"/>	<input type="radio"/>	<input type="radio"/>	<input type="radio"/>	<input type="radio"/>	<input type="radio"/>
Water quality and safety	<input type="radio"/>	<input type="radio"/>	<input type="radio"/>	<input type="radio"/>	<input type="radio"/>	<input type="radio"/>	<input type="radio"/>
Enter another option	<input type="radio"/>	<input type="radio"/>	<input type="radio"/>	<input type="radio"/>	<input type="radio"/>	<input type="radio"/>	<input type="radio"/>

6. Who do you feel is most responsible for addressing climate change and sustainability issues? (1) being most responsible.

	1	2	3	4	5
Residents	<input type="radio"/>	<input type="radio"/>	<input type="radio"/>	<input type="radio"/>	<input type="radio"/>
Local governments	<input type="radio"/>	<input type="radio"/>	<input type="radio"/>	<input type="radio"/>	<input type="radio"/>
State governments	<input type="radio"/>	<input type="radio"/>	<input type="radio"/>	<input type="radio"/>	<input type="radio"/>
Federal governments	<input type="radio"/>	<input type="radio"/>	<input type="radio"/>	<input type="radio"/>	<input type="radio"/>
Businesses	<input type="radio"/>	<input type="radio"/>	<input type="radio"/>	<input type="radio"/>	<input type="radio"/>

## Current and Possible Practices

11. **Energy:** Please answer for each energy efficiency option below in terms of which you would be most willing to do or already doing, which you are not willing to do, or would not consider doing.

	Never heard of	Already doing	Would like to do, but not sure how to get started	Would like to but face obstacles	Don't think I will try this in the next five years	Don't think I would ever try this	City should support a program on this
Switch to an induction cooktop electric stove	<input type="radio"/>	<input type="radio"/>	<input type="radio"/>	<input type="radio"/>	<input type="radio"/>	<input type="radio"/>	<input type="radio"/>
Convert household heating to a heat pump	<input type="radio"/>	<input type="radio"/>	<input type="radio"/>	<input type="radio"/>	<input type="radio"/>	<input type="radio"/>	<input type="radio"/>
Add solar panels to my house or garage rooftop	<input type="radio"/>	<input type="radio"/>	<input type="radio"/>	<input type="radio"/>	<input type="radio"/>	<input type="radio"/>	<input type="radio"/>
Convert all of my household lighting to LED	<input type="radio"/>	<input type="radio"/>	<input type="radio"/>	<input type="radio"/>	<input type="radio"/>	<input type="radio"/>	<input type="radio"/>



## Lesson Learned

1. It was too long. 32 questions and took the average respondent 30 min...
2. A gift card lottery for respondents helped drive responses



# Community Engagement Tools

## Focus Topic Workgroups

- The Task Force developed the six draft focus topics based on industry knowledge and the LEED for Cities Framework.
- The topics were used as areas for the six work groups to focus on

### Sustainability and Climate Action Plan Sections

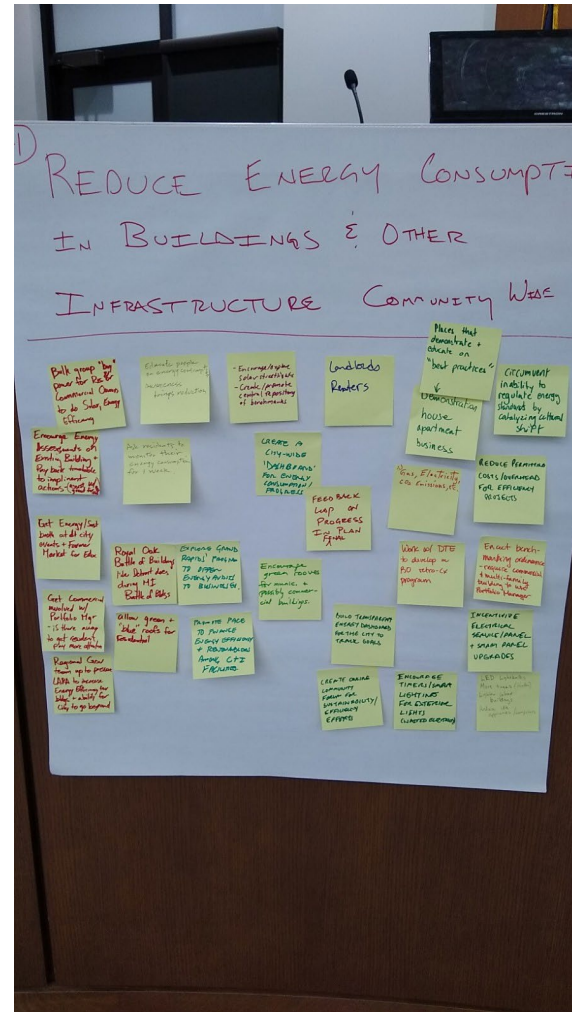
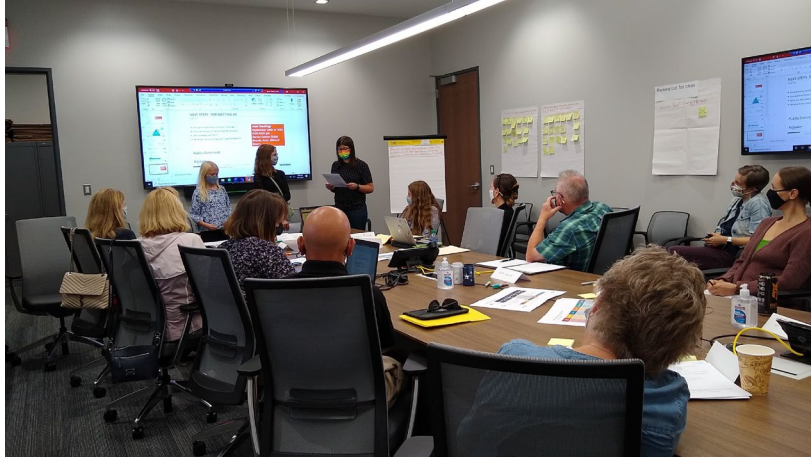


### LEED For Cities Framework



# Community Engagement Tools

## Focus Topic Workgroups



### Lesson Learned

We allocated 10 weeks in which to do four meetings for each focus topic. That was not enough time. Eighteen weeks was more reasonable.

# Reviewing and Evaluating

\*OLD\*(not updated)Draft Obj., and Actions ☆ 📁 🌐

File Edit View Insert Format Data Tools Extensions Help Last edit was seconds ago

100% \$ % .0 .00 123 Default (Ari... 10 B I U A

						Guiding Principles- Do the Actions Impact (positively or negatively)?					
						GREEN = meets - mostly meets		YELLOW = partially meets		RED = minimally meets - doesn't meet	
						Equity/ Access	Health/ Wellness	Economy	Natural Ecosystems	GHG	Resilience
<b>Overall Plan Goal - Reduce 40% community wide greenhouse gas (GHG) emissions by 2030 and Net-zero by 2050</b>											
<b>Revised Vision: Royal Oak (community) prioritizes safety, comfort, and health for all, by fostering a built environment that promotes accessible energy resource efficiency, renewable energy, sustainable building techniques, and resiliency.</b>											
<b>Objectives Sample Targets Notes from Meeting #2 Actions Clarified (Woody &amp; Julie 10/29/2022) Actions Sub-actions</b>											
<b>Reduce energy consumption in buildings and other infrastructure community wide.</b>											
Reduce energy consumption by XX% by 2027	Development will add to the energy consumption- the Griffin, Baker College, OCC's building addition, cannabis industry, etc. How do we compensate in our community wide metrics?	Collect and report annual, community-wide energy consumption	-Establish a consistent methodology to collect and report community-wide energy use (From utilities) -Create a city-wide 'dashboard' for energy consumption/progress; -Build transparent energy dashboard for the city to track goals;	Create a publically accessible dashboard that automatically imports Utility data							
Energy use intensity for municipal (Portfolio Manager measure this unit)	Do we have the total square footage of all buildings in RO? For potential measurement - GIS app? ESRI, GOOGLE	Develop an energy waste reduction program for and in collaboration with Royal Oak's commercial and industrial sectors.	Collaborate with the business community on a voluntary program to benchmark and disclose energy usage and costs, to help drive future energy savings	create/promote central repository of benchmarks; Explore Grand Rapids' progress to offer energy audits to businesses;							
Reduce electric consumption (kWh)	DTE grid tie data	Develop an energy waste reduction program	Collaborate with local landlords to establish a voluntary program for green leases that clarify landlord and tenant responsibilities for energy efficiency projects and associated energy savings								
Reduce gas consumption (Mcf)		ALREADY IN Obj. 2	Bulk group "buy" power for Residential or Commercial owners to do solar, energy efficiency;	Create Solarize Royal Oak							
100% of municipal street lighting is LED by 2030		Develop comprehensive energy education programs for the residents and businesses.	-Educate people on energy consumption, awareness brings reduction; -Encourage energy assessments on existing buildings and pay back timetable to implement actions (city should assist with grants); -Ask residents to monitor their energy consumption for 1 week;	Create an education and outreach campaign to engage businesses and institutions in energy waste reduction efforts **  Get energy/sustainability booth at dt city events and Farmers' Market for education; Create online community forum for sustainability/efficiency efforts;							
Number of energy efficiency education											



## Lesson Learned

A planning consultant would have been helpful to keep the workgroups organized based on the goals, vision, and objectives, and creating true actions for the action-tables (not sub-actions, comments, etc.)



# GENERAL LESSONS LEARNED

Leadership buy-in,  
Having a local environmental group as a collaborator,  
And engaging the community early and often is key

- Doing an audit of existing sustainability initiatives is helpful in showing stakeholders that actions are already being done and that you're not starting from ground zero.
- ICLEI membership is worth the expense for the GHG inventory software access and technical assistance.
- Involve other municipal staff and departments to keep the communication channels open.
- Consider a consultant to help you move through this entire development process.
- If you can't afford a consultant for the whole process, consider a consultant to guide the workgroups' process and develop the written draft framework. (Those were heavy lifts!)
- Look for grants to help fund the work.
- Work to reach minority groups and the youth. We thought we were putting out information in many ways that would reach all, but we did not have much participation from those groups.
- This is hard but important work. Have hope, have fun, and celebrate your wins!



**A key implementation strategy of this plan is to prioritize and integrate sustainability when updating future planning and policy documents:**

- **Master Plan**
- **Five-year Parks & Rec Plan**
- **Capital Improvement Plan (CIP)**
- **Budget planning**
- **and others**





# RESOURCES

- [Royal Oak's 2022 Sustainability & Climate Action Plan](#)
- Michigan Green Communities Challenge: <https://migreencommunities.com/>
- EGLE – Catalyst Communities: <https://www.michigan.gov/egle/outreach/catalyst-communities>
- EGLE – Sustainability for Communities: <https://www.michigan.gov/egle/about/organization/materials-management/energy/communities>
- EGLE- Climate Webinars: [Lessons Learned in Creating a Municipal Climate Action Plan \(Royal Oak's full presentation-recorded 4/26/22\)](#)
- ICLEI: <https://icleiusa.org/>
- EPA - GHG Inventory Tool: <https://www.epa.gov/statelocalenergy/local-greenhouse-gas-inventory-tool>
- Royal Oak's Sustainability webpages at [www.romi.gov/sustainability](http://www.romi.gov/sustainability) (still under construction)  
<https://semcog.org/blog/earth-day-2022-building-sustainability-in-southeast-michigan>

Starting in April, SEMCOG will be working with Public Sector Consultants and ICLEI (Local Governments for Sustainability) to complete a Greenhouse Gas Emissions Inventory for the Southeast Michigan region. This will help local communities to take the first step in sustainability planning, and the data can be used to identify community sectors where emissions can be reduced.



# Making the Case...

## Why is sustainability important to a city??

### Sustainability strategies help facilitate:

- Reduced costs due to energy waste reduction
- Reduced costs due to solid waste tonnage reduction
- Increased brand recognition
- Enhanced quality of life for residents
- Improved perception of how well the city is managed
- Increased competitive advantage (development/growth)
- Access to new residents/business owners
- Increased employee productivity
- Improved ability to attract and retain top talent
- Enhanced stakeholder relations
- Reduced risk: resiliency after natural/man-made disasters

### RESOURCE:

#### **Sustainability Toolkit for Municipalities in Ontario:**

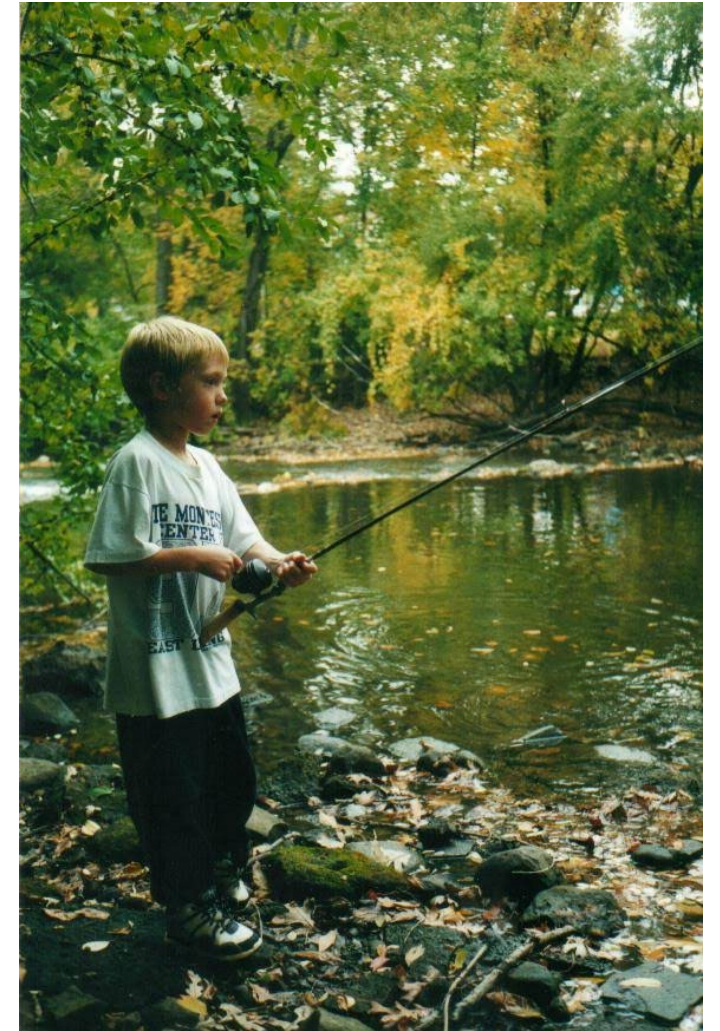
<https://www.cobourg.ca/en/town-hall/resources/Legislative-Services-Licensing/Ann.-C-AMO-Sustainability-Planning-Toolkit.pdf> (Making the Case for Sustainability on slide 23 (Tool#1))

# RESOURCES

Sustainability/Climate Planning		
<b>Plan development</b>		
Bloomington, IN - 2018 Sustainability Plan and planning process notes	<a href="https://bloomington.in.gov/sustainability/action-plan">https://bloomington.in.gov/sustainability/action-plan</a>	
2020 U of M Sustainability 1 pagers	<a href="http://css.umich.edu/sites/default/files/css_doc/Bound_Factsheets_2020.pdf">http://css.umich.edu/sites/default/files/css_doc/Bound_Factsheets_2020.pdf</a>	
DuBuque, IA	<a href="https://www.cityofdubuque.org/DocumentCenter/View/46662/Dubuque-Climate-Action-Plan-2020_Full-Report_FINAL">https://www.cityofdubuque.org/DocumentCenter/View/46662/Dubuque-Climate-Action-Plan-2020_Full-Report_FINAL</a>	
Kirkland, WA	<a href="https://www.kirklandwa.gov/files/sharedassets/public/public-works/recycling/sustainability/sustainability-master-plan-adopted-dec-2020.pdf">https://www.kirklandwa.gov/files/sharedassets/public/public-works/recycling/sustainability/sustainability-master-plan-adopted-dec-2020.pdf</a>	
Lakewood, CO	<a href="https://www.lakewood.org/files/assets/public/planning/sustainability/planning-for-sustainability/lakewoodco-sustainability-plan-2015.pdf">https://www.lakewood.org/files/assets/public/planning/sustainability/planning-for-sustainability/lakewoodco-sustainability-plan-2015.pdf</a>	
Indianapolis, IN	<a href="https://static1.squarespace.com/static/5b4ead40c3c16a711ae78401/t/5c704aa4fa0d6033019e373a/1550863041205/2019CPSR001-ThriveIndianapolis-web.pdf">https://static1.squarespace.com/static/5b4ead40c3c16a711ae78401/t/5c704aa4fa0d6033019e373a/1550863041205/2019CPSR001-ThriveIndianapolis-web.pdf</a>	
Durango	<a href="https://durangogov.org/900/Sustainability-Action-Plan">https://durangogov.org/900/Sustainability-Action-Plan</a>	
<b>Climate Conversations</b>		
NOAA Climate Disasters- Overview	<a href="https://www.ncdc.noaa.gov/billions/">https://www.ncdc.noaa.gov/billions/</a>	
ACCO MI Series	<a href="https://climateofficers.org/michigan-archive">https://climateofficers.org/michigan-archive</a>	
Purdue 2020 Climate Training	<a href="https://ag.purdue.edu/climate/climatetraining2020/">https://ag.purdue.edu/climate/climatetraining2020/</a>	
Skeptical Science	<a href="https://skepticalscience.com/argument.php?f=percentage">https://skepticalscience.com/argument.php?f=percentage</a>	
<b>Misc.</b>		
city sustainability grants for community	<a href="https://www.sustainabledubuque.org/grants">https://www.sustainabledubuque.org/grants</a>	Drive ideas in the community
living sustainably flyer for outreach	<a href="https://files.lasvegasnevada.gov/planning/PD-Sustainability-Flyer.PDF">https://files.lasvegasnevada.gov/planning/PD-Sustainability-Flyer.PDF</a>	
Kim Lundgren Associates, Inc.	<a href="https://www.kimlundgrenassociates.com/en-us/blog/plan-design">https://www.kimlundgrenassociates.com/en-us/blog/plan-design</a>	Climate Plan ideas , nice designs

# My Story

- Environmental Interests
- Internship at Urban Options/Michigan Energy Options 40 years ago
- Grad Student in Community Sustainability 20 years ago
- Interest in healthy communities and learning organizations
- Interest in dialogue as a way of learning, teaching, inspiring, networking, and enjoyment
- 14 years as Environmental Programs Coordinator





# Meridian's Story

- In 2007 joined 1000+ communities in signing the U.S. Mayors Climate Protection Agreement
- A volunteer-driven Energy Team formed in 2008
- In 2017, adopted a resolution of support for the Paris Climate Accord on June 20, 2017 and its first Climate Sustainability Plan
- Meridian is currently updating this plan with help from several self-directed teams.



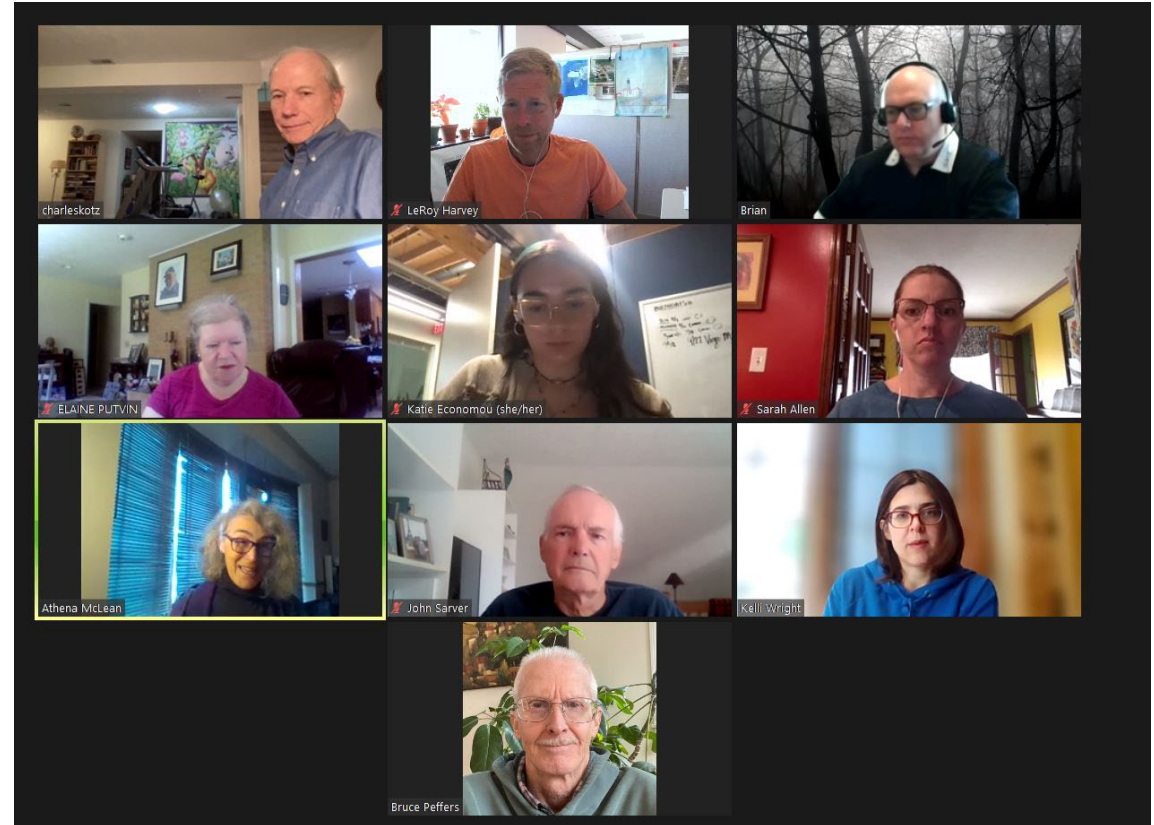
# Two Themes

- **Self-Directed Teams**
- **Green Dialogues**



# Self-Directed Teams

- Green Team
- Energy Team
- Wetland Education Team
- Food to Compost Committee
- Gleaning Team
- Meridian Conservation Corp
- Green Grants Committee
- Tree Team
- Okemos Earth Club/Podcast Project
- ....Create Your Own!





# Benefits/Strengths of Small Teams

- Easy to Launch
- Few – if any - Limits (agenda, procedural, open meetings, membership)
- Accessible & Inclusive
- Self-Directed
- Inspiration-driven & Shared Leadership
- Nimble & Responsive
- Sustainable
- Fun





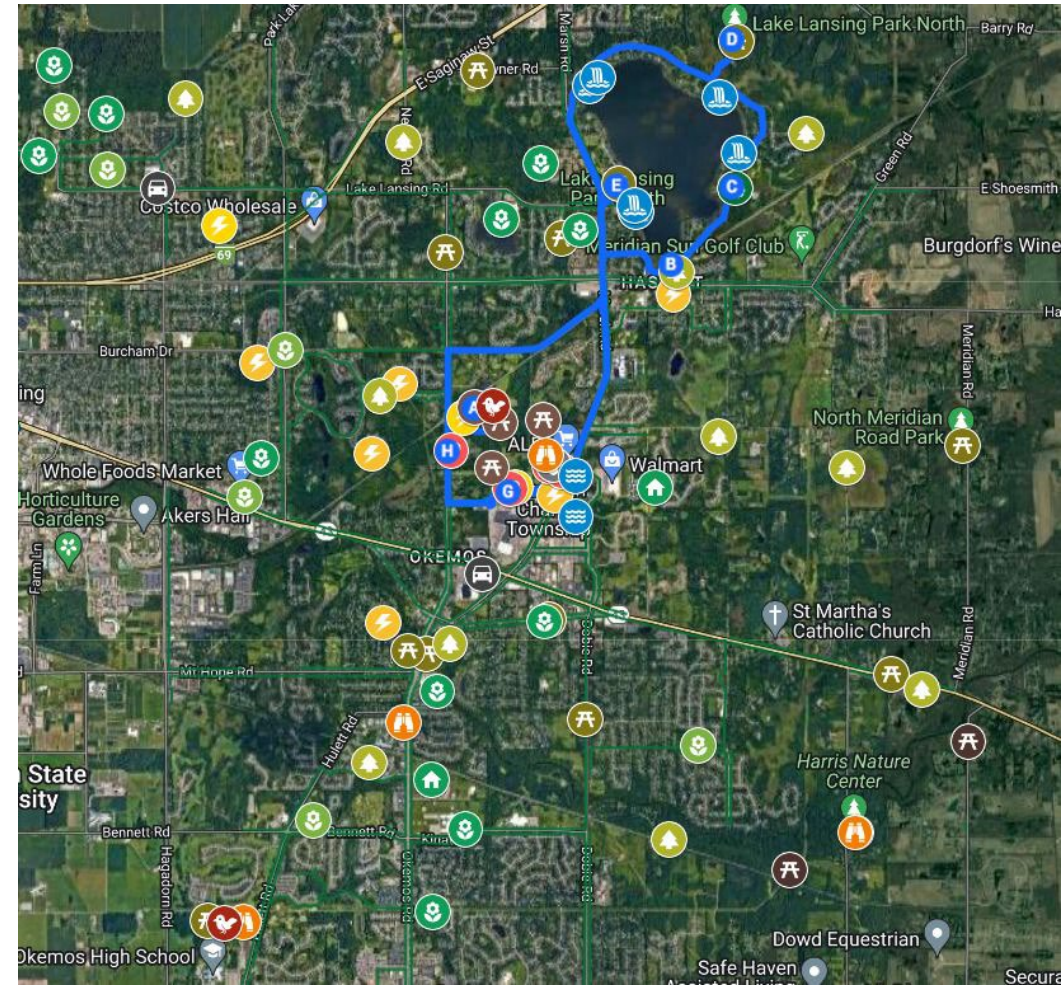
# Green Dialogues

- Ongoing weekly for 2 years
- Most are open agenda – occasional guest speakers to kick off conversation
- People talking about their interests – a place to share ideas and get inspired
- Not results oriented – but many initiatives have spun-off
- Invitation: Tune in any Wednesday at 9am: Click <http://bit.ly/green-conversations> (Zoom Link)
- Stay as long as you like. Ends at 10ish.



# Outcomes of Green Dialogues

- Learning on Many Topics
- Green Neighbors Network
- Land Preservation
- Green Fairs
- Green Map and Sustainable Home and Landscape Tour
- Wetland Education
- Food to Compost Committee
- Residential and Neighborhood Projects
- Green Grants



Email [Harvey@meridian.mi.us](mailto:Harvey@meridian.mi.us) or call 517.853.4466 for more information

# Lessons We're Learning

- **Small teams can be an important part of planning *and* implementation**
- **Focus and scope that's manageable – not overwhelming**
- **Focus on what's wanted**
- **Learn from others**
- **Municipality can support in many ways (email, web, zoom, meeting space, media outreach, etc.)**
- **Creating Climate Action Plans can be a catalyst for dialogue collaboration**
- **People have diverse interests (we don't all have to agree) – health, safety, economics, waste reduction, energy self-sufficiency, protecting nature, neighborhood beautification, recreation, etc.**
- **Dialogue can be an effective process for positive change**





MICHIGAN  
**GREEN**  
COMMUNITIES

Accelerate environmentally sustainable actions by communities  
**to enhance Michigan's livability & economic competitiveness**  
in the 21st century global green economy.





# PARTNERS



# MGC Components

## Annual MGC Challenge

- Opening December 2022

## Networking

- Virtual & in person

## Technical Assistance

- Catalyst Communities
- Cohorts

# MGC Challenge Categories

1. Planning for Inclusive & Lasting Impacts
2. Climate Resilience & Adaptation
3. Energy Efficiency & Renewable Energy
4. Responsibly Managing Materials
5. Sustainable Land Use & Economic Development
6. Improving Health Outcomes
7. Protecting & Conserving Water Resources
8. Support Clean & Inclusive Mobility
9. Inspire & Mobilize Residents



# Funding Information and Assistance


- IIJA Funding Tracker
- ServeMICity from the League
- Local Infrastructure Hub
- State Agencies
- Official BIL Website

Infrastructure Investment and Jobs Act - Funding Opportunities Tracker	B	C	D	E	F	G	H	I	J
Funding Opportunity Name <small>*Cell hyperlinks to "Funding Opps &amp; Eligible Uses" tab for detailed description</small>	Roads, Bridges, & Major Projects	Public Transport	Electric Vehicles, Buses, & Ferries	Other Transportation	Clean Energy & Power	Water	Resilience	Other	Federal Agency Bureau of
<a href="#">Watershed Rehabilitation Program</a>						✓			USDA National R
<a href="#">Drinking Water State Revolving Fund Lead Service Lines Replacement</a>						✓			EPA State and T
<a href="#">Drinking Water State Revolving Fund</a>						✓			EPA State and T
<a href="#">Clean Water State Revolving Fund</a>						✓			EPA State and T
<a href="#">Water Infrastructure Improvements for the Nation Small and Underserved Communities Emerging Contaminants Grant Program</a>						✓			EPA State and T



# EECBG – Energy Efficiency & Conservation Block Grants

- Formula funding for 35,000+ residents
- Applications for local units under 35,000
- 60% of state allocation will go to local units of government

City and County EECBG Grant Calculator	
Direct Formula EECBG Funding Allocation Estimates for Local Governments	
	
User Selection	
County or City:	City
State:	Michigan
City:	Muskegon city, Michigan
Results	
Eligible for Local Government Alternative 1 formula allocation?	Yes
Eligible for Local Government Alternative 2 formula allocation?	No
<b>FY22 Total Estimated EECBG Funding Allocation</b>	<b>\$82,187</b>



# Uses for EECBG

- Energy efficiency and conservation strategy
- Commercial & residential energy audits
- Financial incentive programs for energy efficiency improvements
- Developing and implementing energy efficiency and conservation programs for buildings and facilities
- Conserving energy used in transportation (e.g. flex time for employees; satellite work centers; zoning guidelines or requirements that promote energy efficient development; infrastructure, such as bike lanes, pathways and pedestrian walkways; and synchronized of traffic signals)
- Increasing participation and efficiency rates for recycling programs
- Replacing traffic signals and street lighting
- Purchasing and implementing technologies to reduce and capture methane and other greenhouse gases generated by landfills or similar sources
- Developing, implementing and installing on or in any government building onsite renewable energy technology that generates electricity from renewable resources
- Financing energy efficiency, renewable energy and zero-emission transportation (and associated infrastructure), capital investments, projects and programs for leveraging of additional public and private sector funds

# Questions?

**Julie Lyons Bricker**  
[JulieB@romi.gov](mailto:JulieB@romi.gov)

**LeRoy Harvey**  
[Harvey@meridian.mi.us](mailto:Harvey@meridian.mi.us)

**Danielle Beard**  
[dbeard@mml.org](mailto:dbeard@mml.org)  
[www.migreencommunities.com](http://www.migreencommunities.com)

