

# CASS COMMUNITY SOCIAL SERVICES' TINY HOMES



# 25 HOUSES EACH ON A 30'X100' LOT







THEY ARE BEING BUILT  
ON VACANT LAND





# NEW RESIDENTS WILL ACCESS SERVICES ON CASS' PEDESTRIAN CAMPUS





# WHAT WILL MAKE CASS TINY HOUSES DIFFERENT THAN....



# “RENT THEN OWN”





# HOMEOWNERSHIP



# TINY HOUSE RESIDENTS





# RENTERS





# BUILDING THE HOMES





# VOLUNTEER OPPORTUNITIES





# NETWORKING OPPORTUNITIES





# BUILDING MATERIALS





# FOUNDATIONS





# PORCH/DECKS





# INCLUDED

- Stove
- Refrigerator
- Microwave
- Washer/Dryer Combo
  
- Heater/Air Unit
- Hot Water on Demand
  
- Furniture – Bed, Table and Chairs, Sofa, Lamps.
- Dishes, Pots/Pans, Towels, Trash Cans, Shower Curtain, Sheets, Mailbox, Landscaping.



# LANDSCAPING





# SECURITY SYSTEMS



# PROJECTED SCHEDULE



**September 2016**

First Home Opened

**May 2017**

Homes #s 2-7  
completed

**September 2018**

Homes #s 8-13  
completed

**August 2019**

Homes #s 14-20  
completed

**September 2019**

Homes #s 21-25  
started

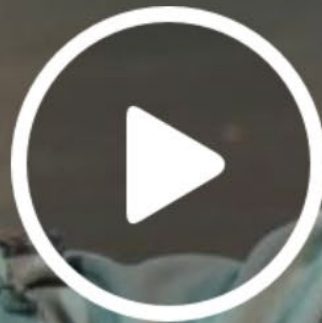
**2020**

Family-sized  
homes and  
commercial strip

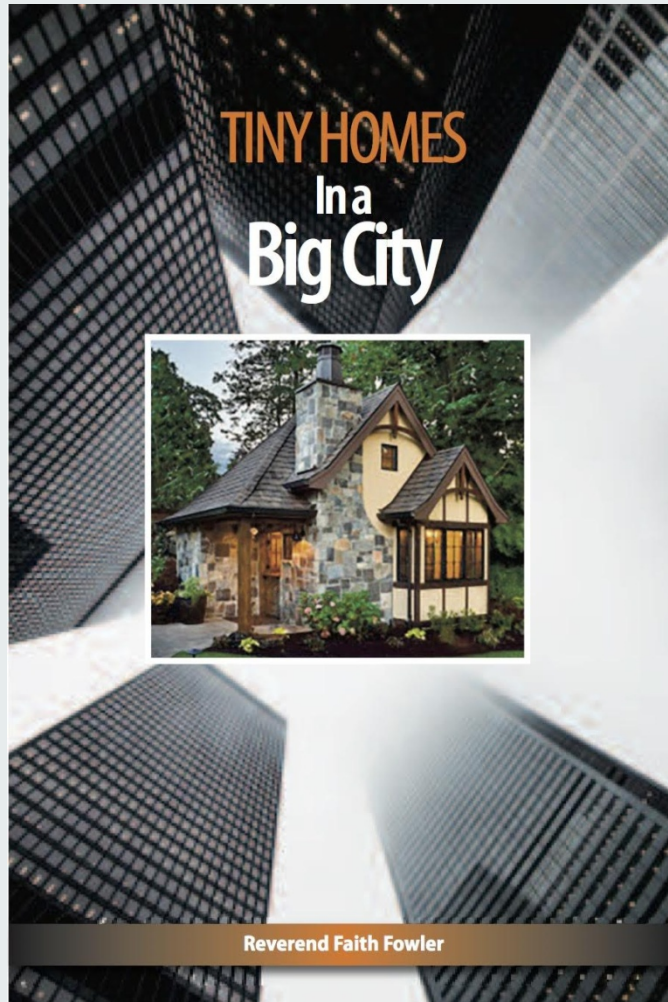


SOCIAL MEDIA – 13 MILLION VIEWS IN  
2016. NOWTHIS AND CURBED DETROIT  
90,000,000 VIEWS IN 2017

# THIS TINY HOUSE PROJECT IN DETROIT



# TINY HOMES IN A BIG CITY BOOK LAUNCHED – SEPT. 11, 2017





# WHY TINY HOUSES CAN SAVE THE EARTH



AVERAGE HOUSE

VS

TINY HOUSE

## AVERAGE HOUSE SIZE IN 2015

2657 SF<sup>1</sup>

It takes about 7 1/2 logging hours to provide lumber for an average house

The average house has 46 light bulbs consuming 653 Wh of electricity



25 - 40 % of solid waste stream is construction related

In the U.S. buildings account for 72% of total electricity used

Buildings create 38% of the nation's total carbon dioxide

The average home size has increased by 61% in the last 40 years

Laid end-to-end, lumber to build a 3k SF house would stretch 4 miles

Construction of houses accounts for 3/4 of lumber used yearly in U.S.

15% of greenhouse gases come from residential houses

## AVERAGE CASS TINY HOME

325 SF<sup>2</sup>

It takes about 7/8 logging hours to provide lumber for a Cass Tiny Home

The average Cass Tiny Home has 7 light bulbs consuming 99.4 Wh of electricity



AVERAGE HOUSE IN 2015

VS

AVERAGE CASS TINY HOME

## ELECTRICITY

13,067 kWh/yr

Since the industrial Revolution, CO2 in the atmosphere is higher than at any time in the past 100 million years

1,598 kWh/yr

## HEATING

16,363 pounds CO2

More than 1 M species have become extinct due to the effects of global warming

2,002 pounds CO2

## COOLING

8,182 pounds CO2

Since 1870, global sea levels have risen by roughly 8"

1,001 pounds CO2

TOTAL:  
28,636  
POUNDS

Cass Tiny houses can save 26,000 pounds of CO2 per year from going into the atmosphere

By living in a Cass Tiny house, you can significantly decrease the burden you place on resources

TOTAL:  
3,503  
POUNDS

WINNER!

Consumption of fossil fuels has contributed significantly to the degradation of our environment. Global warming, climate change, extinction of wildlife species, depletion of the ozone layer, and increased levels of pollution are some of the problems we face. The release of CO2 into our atmosphere is the largest contributor to global warming.

9/18/2018 - 1) <http://www.usda.gov/farm> 2) <http://www.usda.gov/farm> 3) <http://www.usda.gov/farm> 4) <http://www.usda.gov/farm> 5) <http://www.usda.gov/farm> 6) <http://www.usda.gov/farm> 7) <http://www.usda.gov/farm> 8) <http://www.usda.gov/farm> 9) <http://www.usda.gov/farm> 10) <http://www.usda.gov/farm> 11) <http://www.usda.gov/farm> 12) <http://www.usda.gov/farm> 13) <http://www.usda.gov/farm> 14) <http://www.usda.gov/farm> 15) <http://www.usda.gov/farm> 16) <http://www.usda.gov/farm> 17) <http://www.usda.gov/farm> 18) <http://www.usda.gov/farm> 19) <http://www.usda.gov/farm> 20) <http://www.usda.gov/farm> 21) <http://www.usda.gov/farm> 22) <http://www.usda.gov/farm> 23) <http://www.usda.gov/farm> 24) <http://www.usda.gov/farm> 25) <http://www.usda.gov/farm> 26) <http://www.usda.gov/farm> 27) <http://www.usda.gov/farm> 28) <http://www.usda.gov/farm> 29) <http://www.usda.gov/farm> 30) <http://www.usda.gov/farm> 31) <http://www.usda.gov/farm> 32) <http://www.usda.gov/farm> 33) <http://www.usda.gov/farm> 34) <http://www.usda.gov/farm> 35) <http://www.usda.gov/farm> 36) <http://www.usda.gov/farm> 37) <http://www.usda.gov/farm> 38) <http://www.usda.gov/farm> 39) <http://www.usda.gov/farm> 40) <http://www.usda.gov/farm> 41) <http://www.usda.gov/farm> 42) <http://www.usda.gov/farm> 43) <http://www.usda.gov/farm> 44) <http://www.usda.gov/farm> 45) <http://www.usda.gov/farm> 46) <http://www.usda.gov/farm> 47) <http://www.usda.gov/farm> 48) <http://www.usda.gov/farm> 49) <http://www.usda.gov/farm> 50) <http://www.usda.gov/farm> 51) <http://www.usda.gov/farm> 52) <http://www.usda.gov/farm> 53) <http://www.usda.gov/farm> 54) <http://www.usda.gov/farm> 55) <http://www.usda.gov/farm> 56) <http://www.usda.gov/farm> 57) <http://www.usda.gov/farm> 58) <http://www.usda.gov/farm> 59) <http://www.usda.gov/farm> 60) <http://www.usda.gov/farm> 61) <http://www.usda.gov/farm> 62) <http://www.usda.gov/farm> 63) <http://www.usda.gov/farm> 64) <http://www.usda.gov/farm> 65) <http://www.usda.gov/farm> 66) <http://www.usda.gov/farm> 67) <http://www.usda.gov/farm> 68) <http://www.usda.gov/farm> 69) <http://www.usda.gov/farm> 70) <http://www.usda.gov/farm> 71) <http://www.usda.gov/farm> 72) <http://www.usda.gov/farm> 73) <http://www.usda.gov/farm> 74) <http://www.usda.gov/farm> 75) <http://www.usda.gov/farm> 76) <http://www.usda.gov/farm> 77) <http://www.usda.gov/farm> 78) <http://www.usda.gov/farm> 79) <http://www.usda.gov/farm> 80) <http://www.usda.gov/farm> 81) <http://www.usda.gov/farm> 82) <http://www.usda.gov/farm> 83) <http://www.usda.gov/farm> 84) <http://www.usda.gov/farm> 85) <http://www.usda.gov/farm> 86) <http://www.usda.gov/farm> 87) <http://www.usda.gov/farm> 88) <http://www.usda.gov/farm> 89) <http://www.usda.gov/farm> 90) <http://www.usda.gov/farm> 91) <http://www.usda.gov/farm> 92) <http://www.usda.gov/farm> 93) <http://www.usda.gov/farm> 94) <http://www.usda.gov/farm> 95) <http://www.usda.gov/farm> 96) <http://www.usda.gov/farm> 97) <http://www.usda.gov/farm> 98) <http://www.usda.gov/farm> 99) <http://www.usda.gov/farm> 100) <http://www.usda.gov/farm>



# SOLAR DEVELOPMENT

