

A stylized map of Michigan is centered in the background, filled with a dark blue grid pattern. The map is set against a solid blue background that transitions to black at the bottom.

SEMCOG

Southeast Michigan Council of Governments

SEMCOG

SEMCOG Region



A map of the Southeastern Michigan Council of Governments (SEMCOG) region, showing the outlines of all 23 counties. The map is overlaid on a dark blue background with a grid pattern. The text 'SEMCOG Member Communities, all counties belong' is written in orange at the bottom of the map area.

**SEMCOG Member Communities,
all counties belong**

SEMCOG

SEMCOG Issue Areas



Transportation



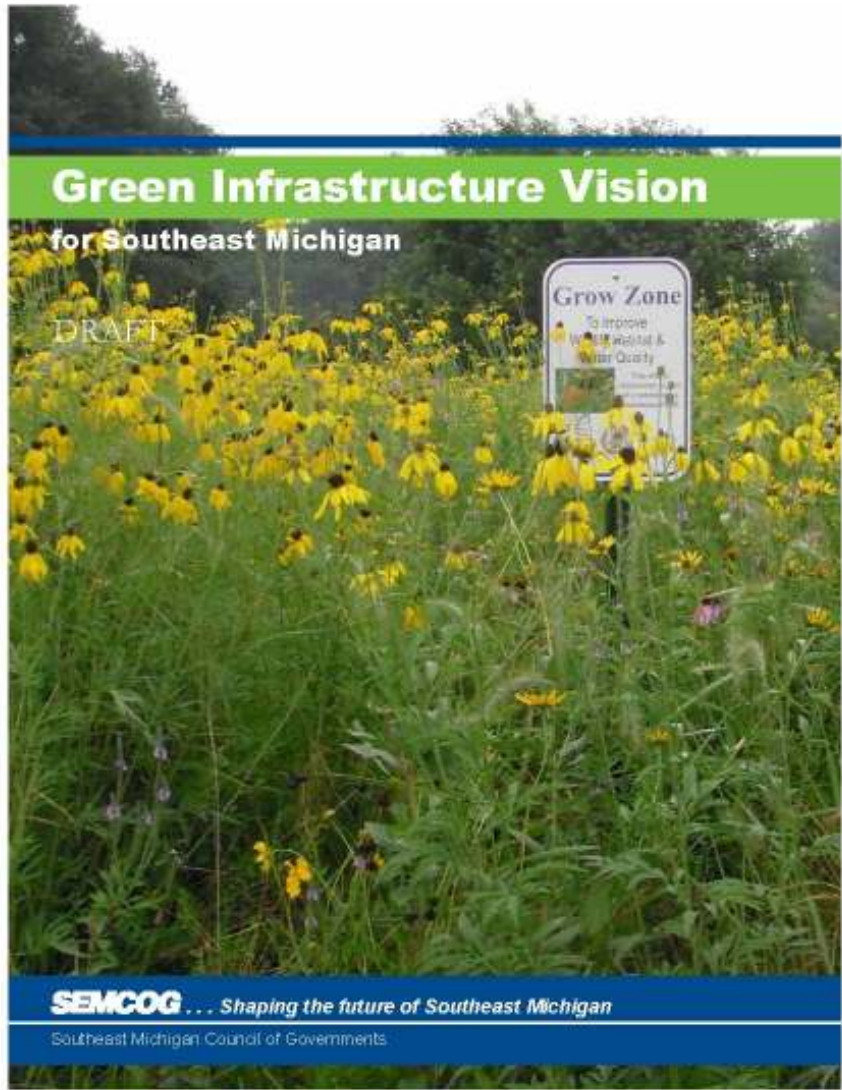
Community and
Economic Development



Green Infrastructure, Water Quality
and Air Quality

Economic Development Strategy

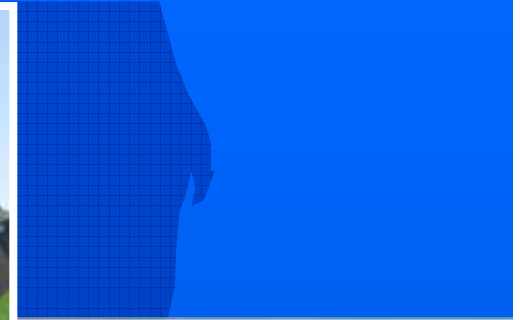




Economic Benefits *Residential*

- 3-14% increase in residential property values when located near parks, wetlands, and trees





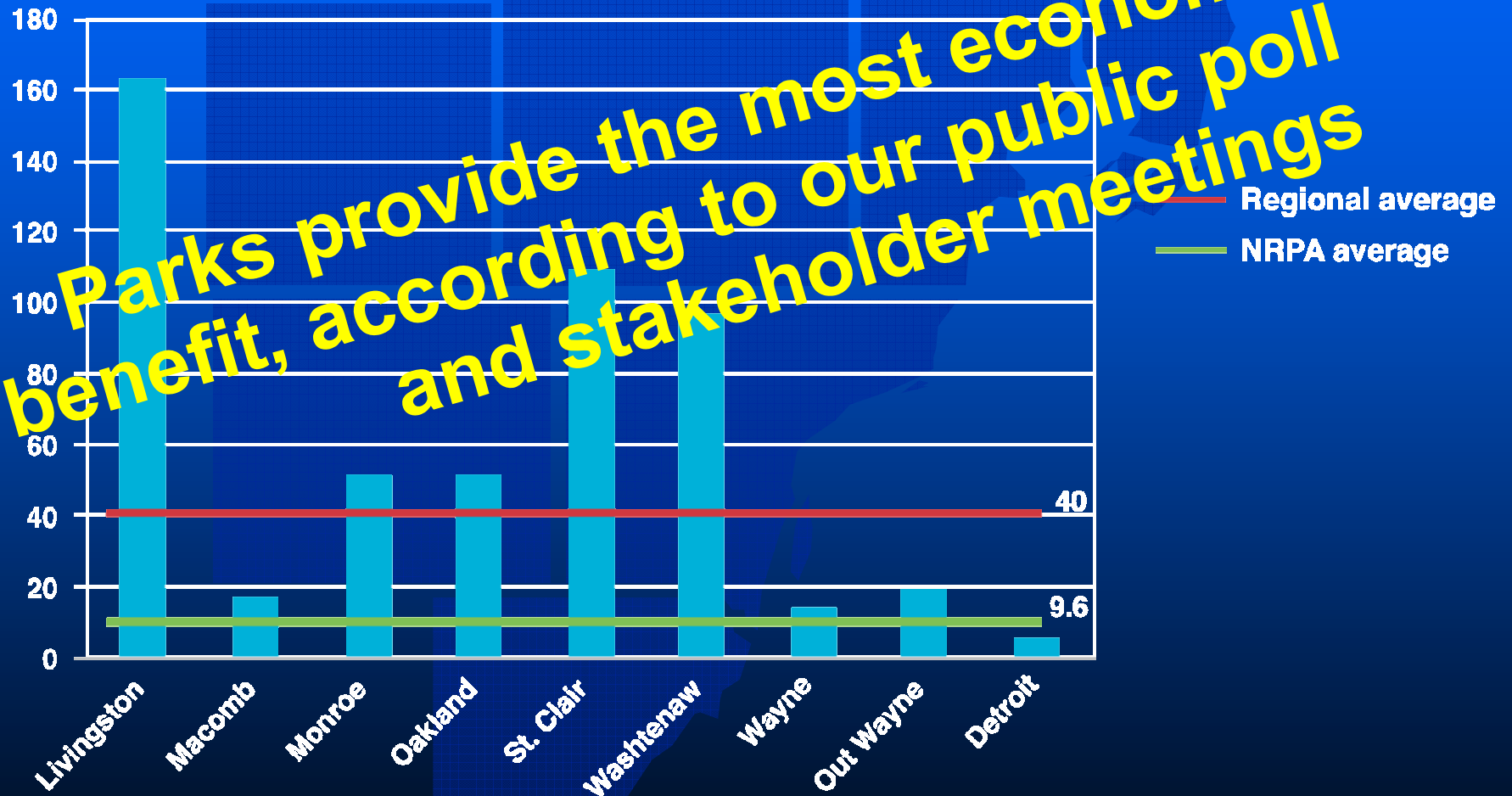
- **Benchmark what we have**
- **Vision where we want to go**
- **Regional policies how to get there**

Luna Pier Trust Fund Project



Parks

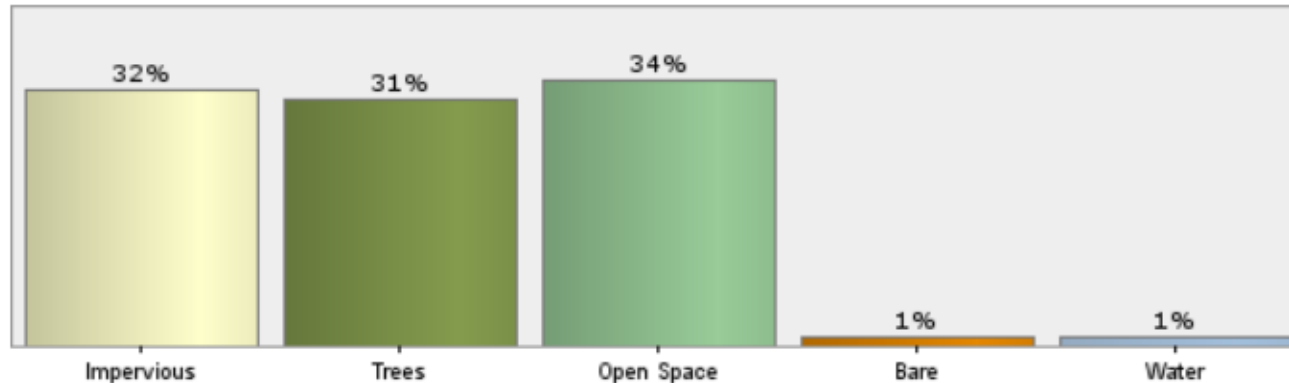
Parks provide the most economic benefit, according to our public poll and stakeholder meetings



Community Level Land Cover City of Rochester Hills

Land Cover

SEMCOG Land Cover in 2010



Type		Acres	Percent
Impervious	(buildings, roads, driveways, parking lots)	6,802	32.3%
Trees	(woody vegetation, trees)	6,561	31.2%
Open Space	(agricultural fields, grasslands, turfgrass)	7,088	33.7%
Bare	(soil, aggregate piles, unplanted fields)	290	1.4%
Water	(rivers, lakes, drains, ponds)	300	1.4%
Total Acres		21,040	100.0%

Note: Land Cover was derived from [SEMCOG's 2010 Leaf off Imagery](#).

Benchmarking the Nonmotorized System

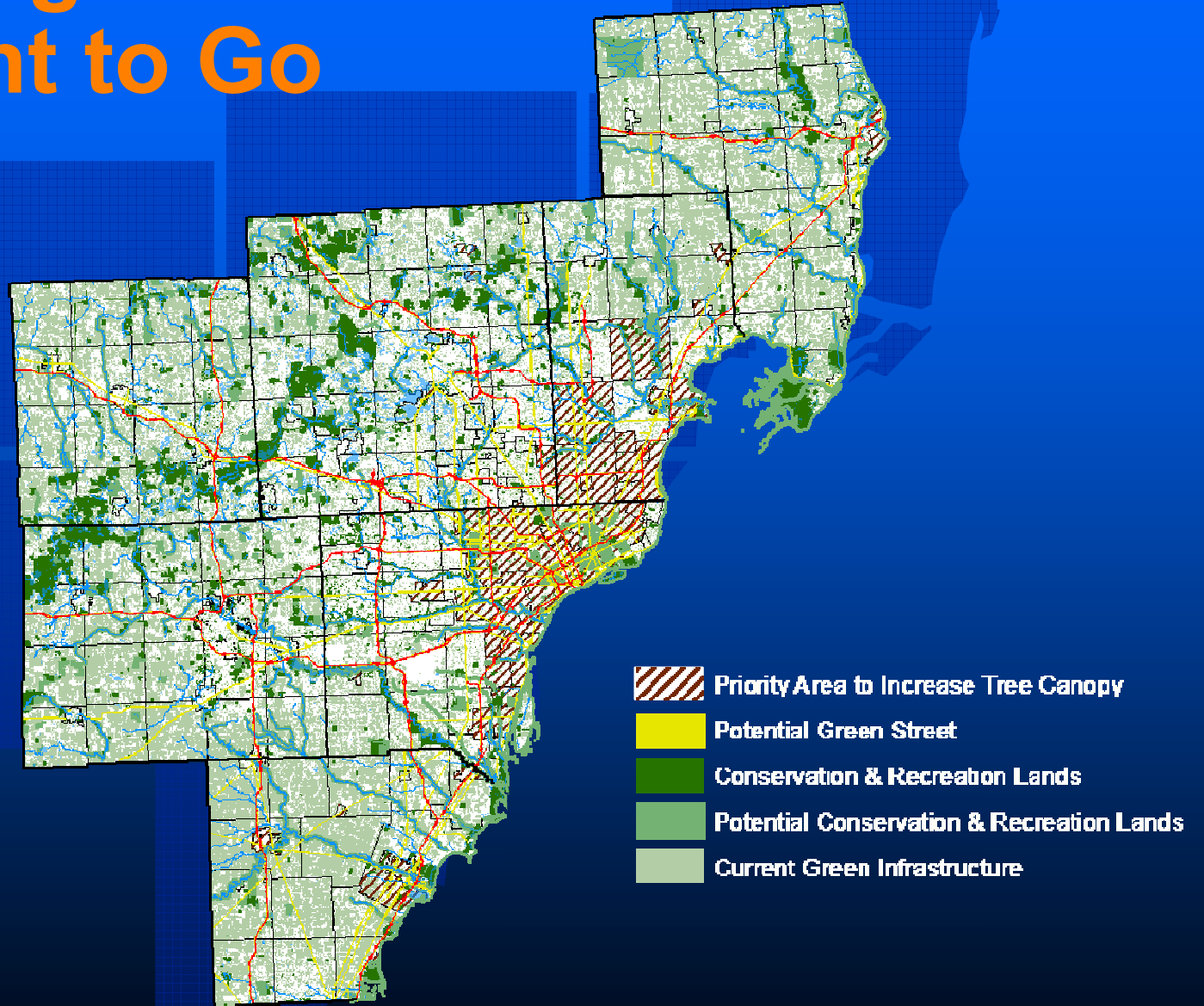
- Existing = 2,642 miles
- Planned = 1,492 miles



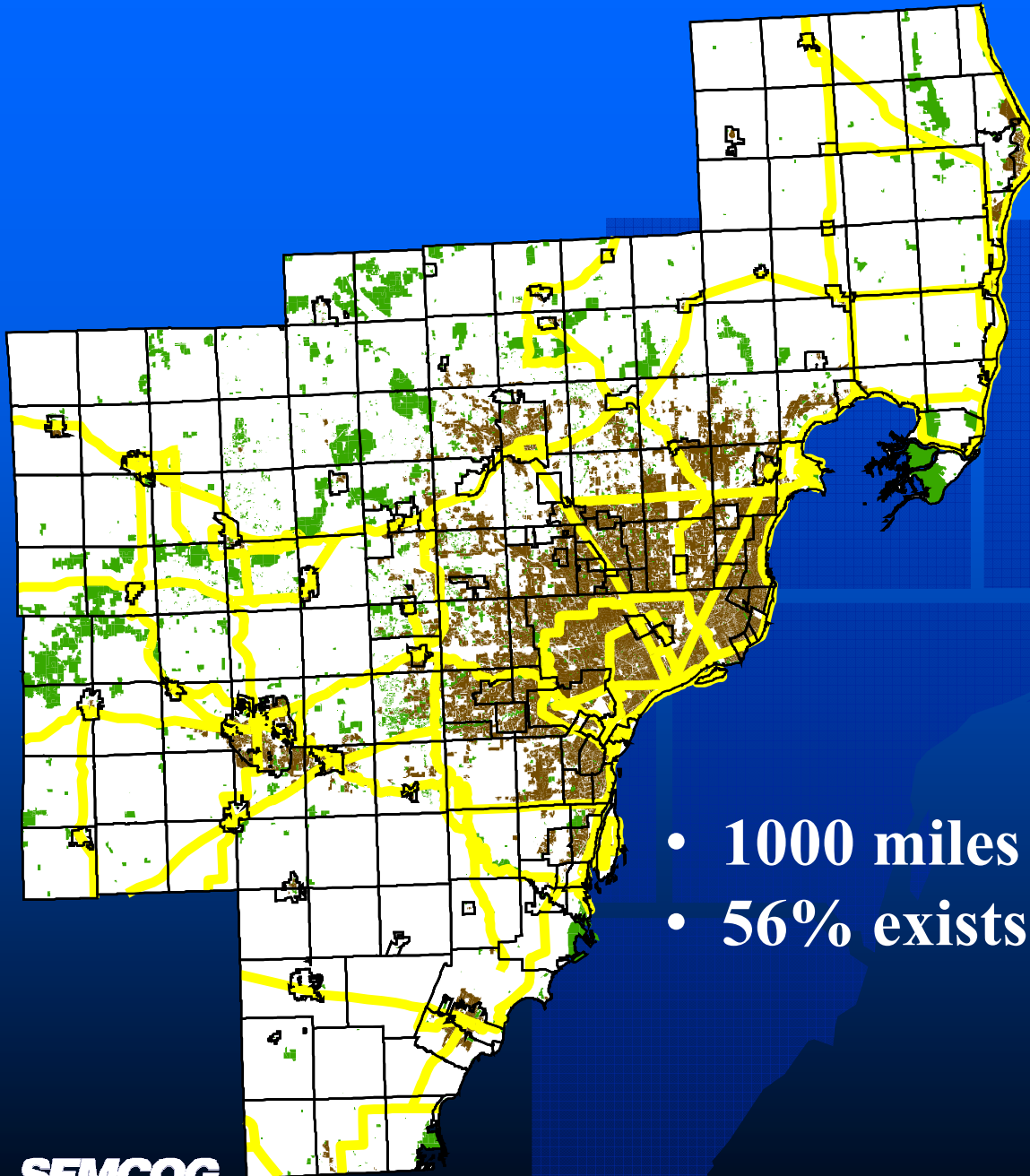
Visioning Where We Want To Go



Visioning Where We Want to Go

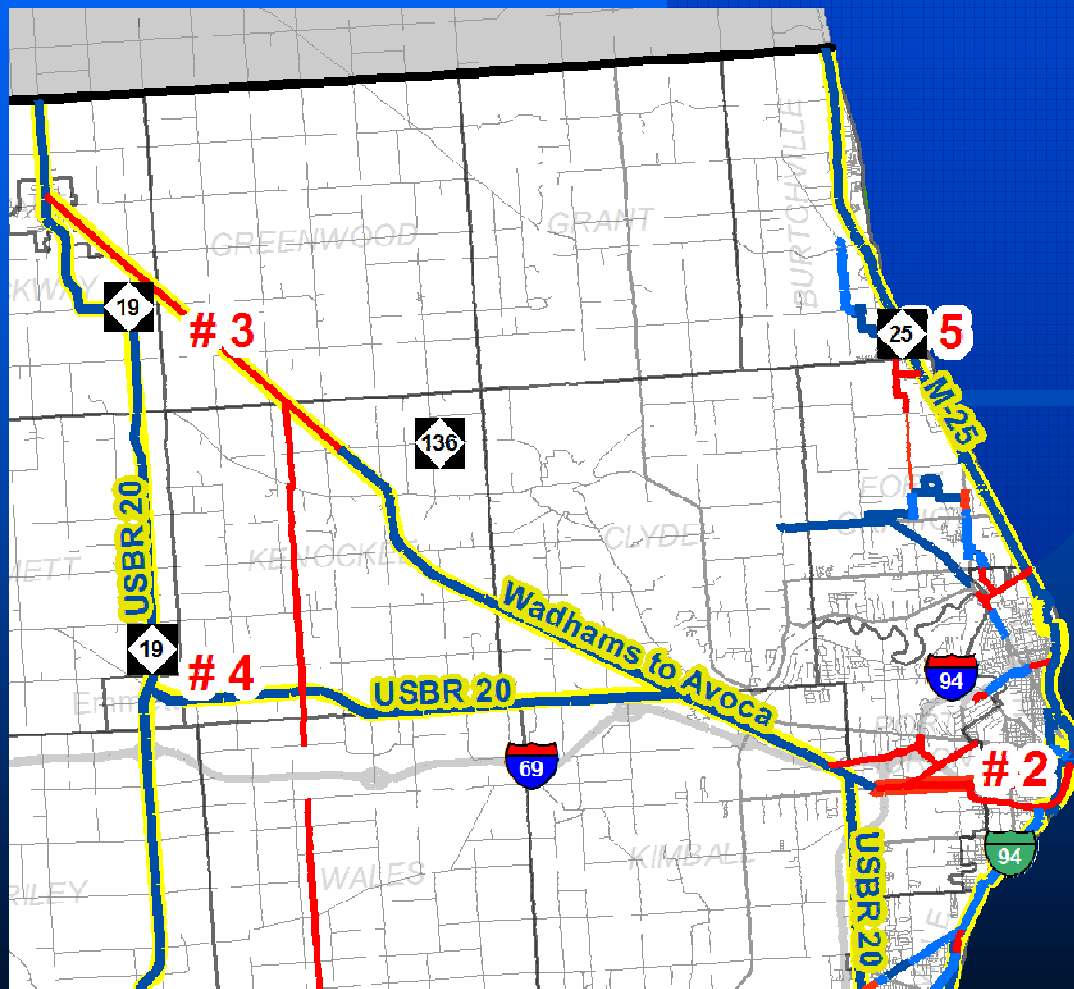







Regional Corridors



- 1000 miles of regional corridors
- 56% exists

Regional Corridors & Gaps Northeast St. Clair County

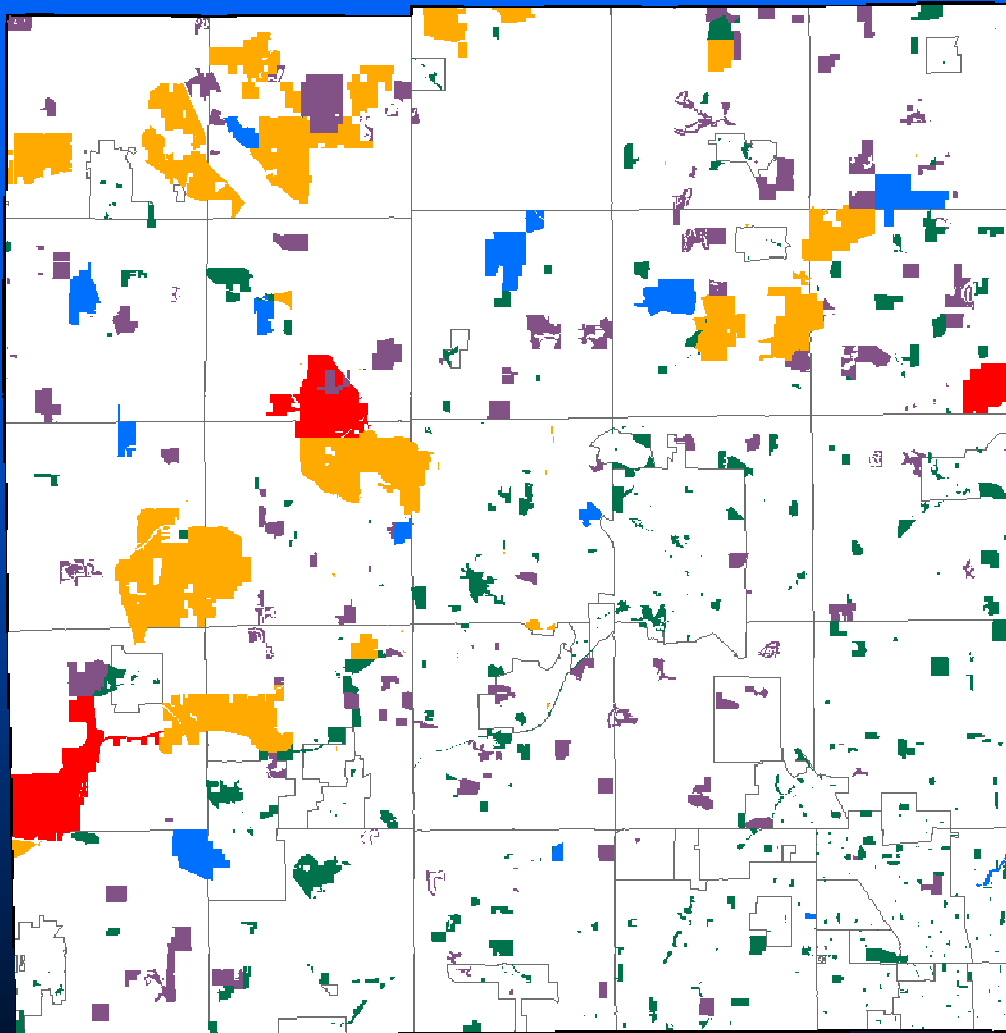



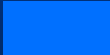



-  Regional Corridor
-  Existing Facility or Route
-  Gaps (Regional & Local)
-  Planned Bike Route
-  Local Corridor-Preliminary Concept

**There's More To Do . . .
Public access provides greatest
economic benefit**



Coordinate Activities



-  Municipality
-  County
-  Huron-Clinton Metropolitan Authority
-  State of Michigan
-  Private Owner



**SEMI
WILD**
PROTECT OUR TRUE NATURE



**Market What We Have &
Celebrate Successes!**

Education and Placemaking



City of Utica



City of Rochester



City of Mt. Clemens



SEMCOG

City of Port Huron



SEMCOG

A stylized map of Michigan is centered in the background, filled with a dark blue grid pattern. The map is set against a solid blue background that transitions to black at the bottom.

SEMCOG

Southeast Michigan Council of Governments

SEMCOG