

# BALANCING ACT: INDUSTRIAL HISTORY AND THE ENVIRONMENT AT KEWEENAW NATIONAL HISTORICAL PARK



**Scott F. See, PhD**  
Executive Director

Keweenaw National Historical Park Advisory Commission



800,000 acres

The park's area of influence, via the Keweenaw NHP Advisory Commission, covers the entire Keweenaw Peninsula

1,870 acres

The amount of land within the legislated boundaries of Keweenaw NHP

142 acres

The amount of land actually owned by the park



Calumet Unit



Quincy Unit



Park influence through Advisory Commission: 800,000 acres

Calumet Unit: 750 acres  
Quincy Unit: 1,120 acres

0 20 Kilometers  
0 20 Miles

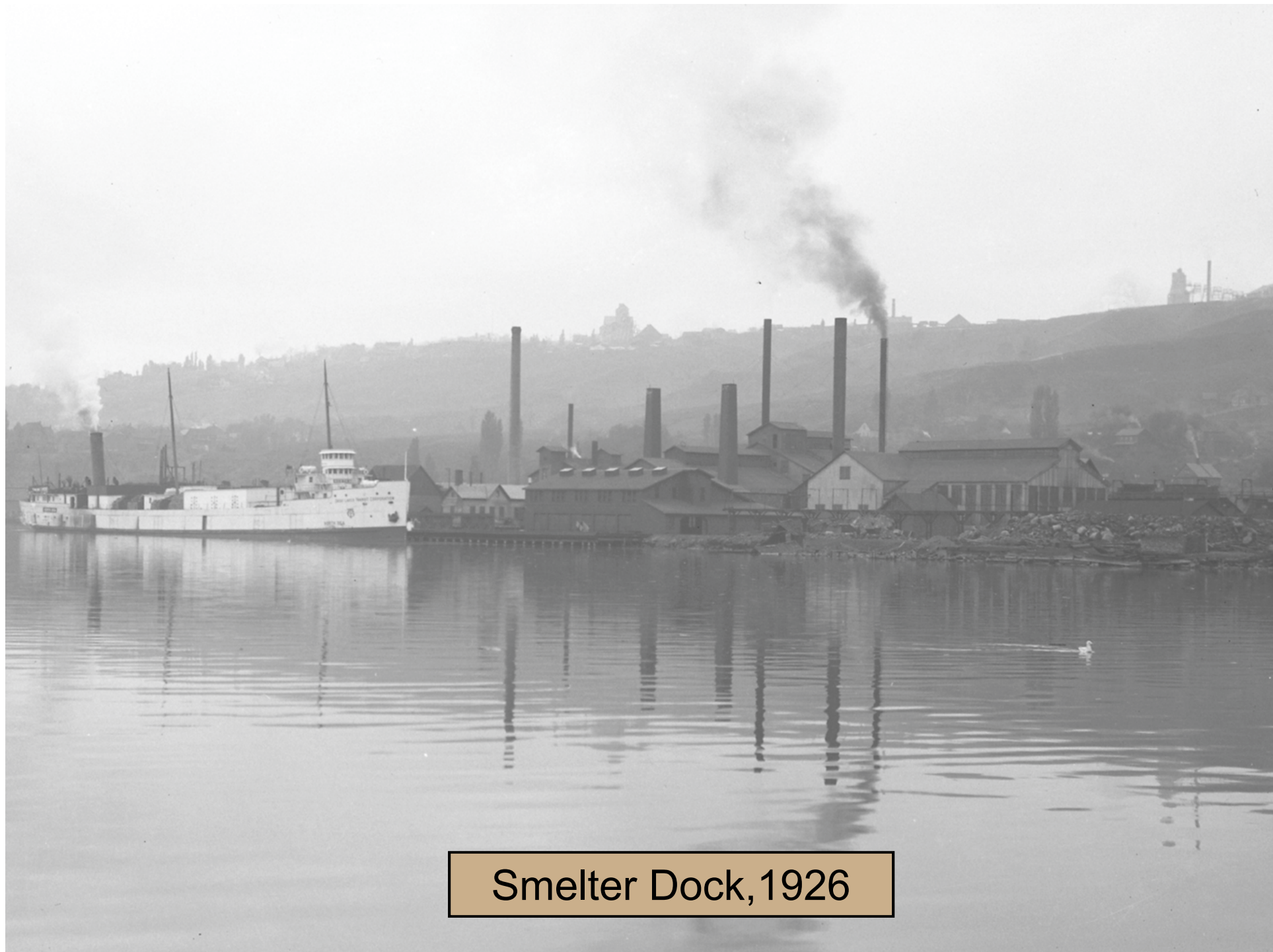
July 21st

COPYRIGHT, 1906, BY  
DETROIT PUBLISHING CO.

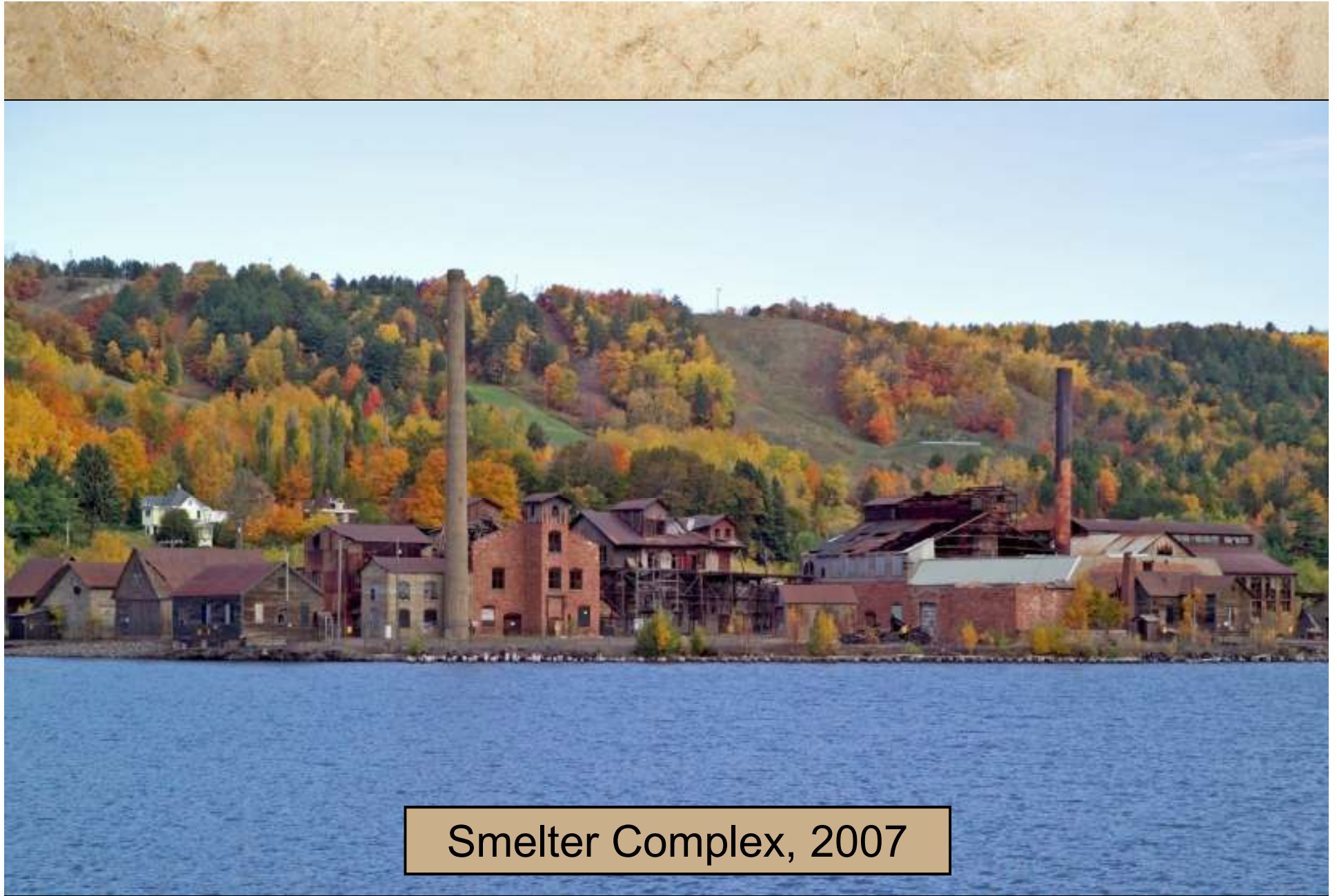


Smelter Postcard, 1906

10033 QUINCY HILL AND QUINCY SMELTERS, MARCOCK, MICH.

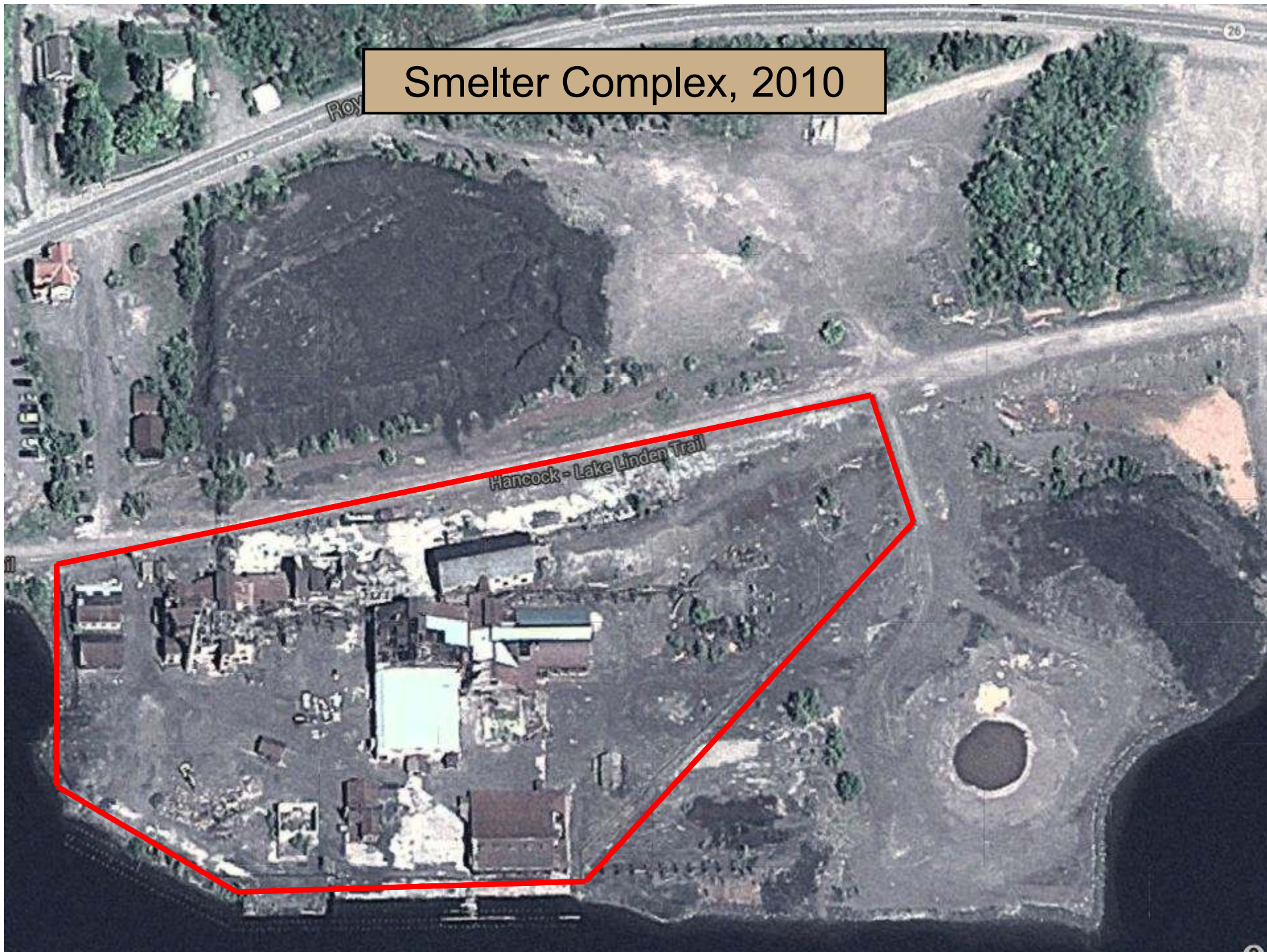


Smelter Dock, 1926



Smelter Complex, 2007

Smelter Complex, 2010





Cupola Furnace, 2009



Cupola Furnace, 2013





Casting Shed, 2010



Casting Shed, 2012



2007



2014





EPA Remediation, 2012



EPA Remediation, 2012



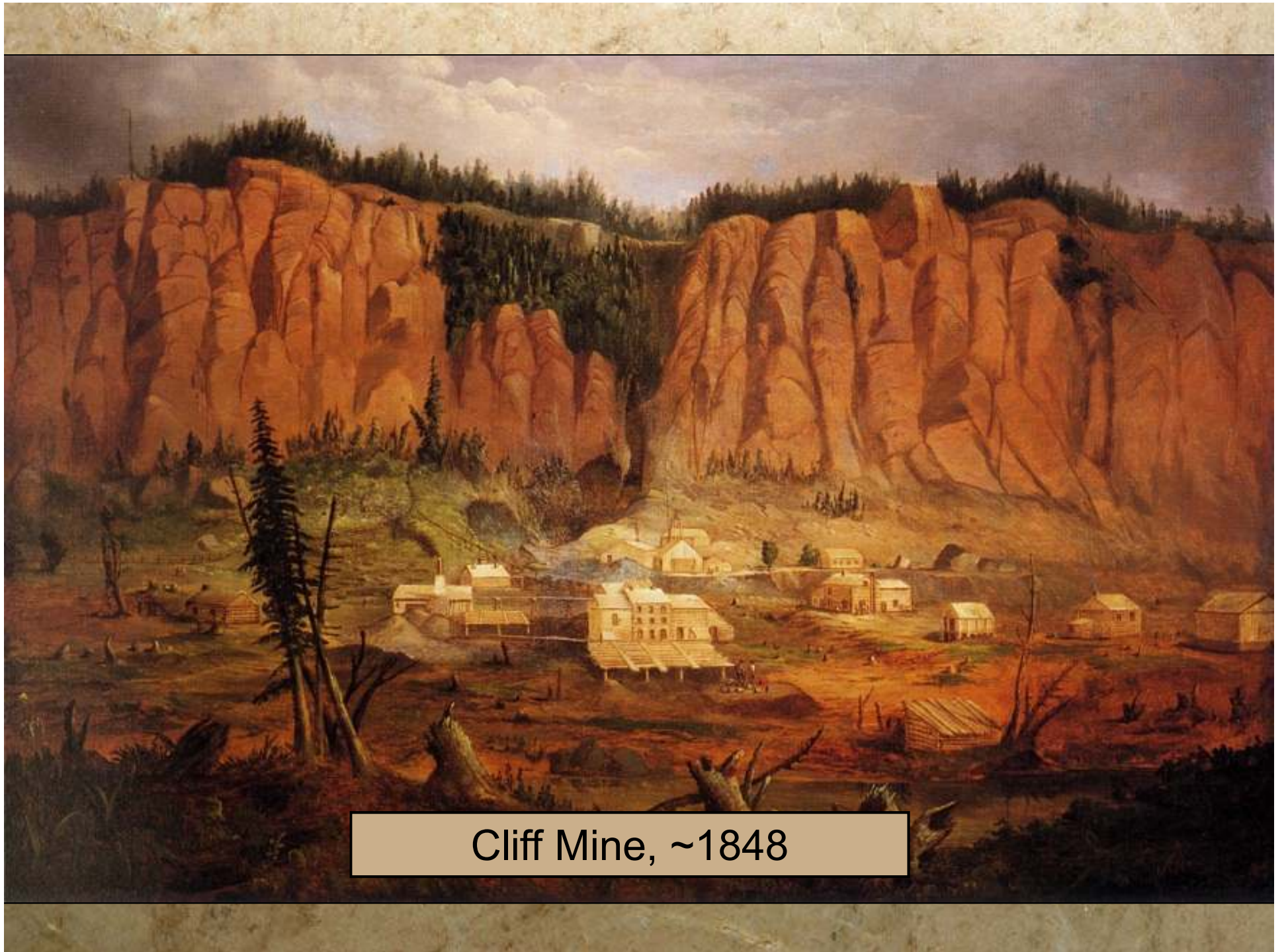
EPA Remediation, 2012

# QUINCY SMELTER SUMMARY

- PROJECT DOMINATED BY TWO MAJOR PARTNERS
- THE RESULTING LANDSCAPE ILLUSTRATES DIFFERING OBJECTIVES







Cliff Mine, ~1848



Cliff Mine and Clifton, ~1910



Cliff Mine Today

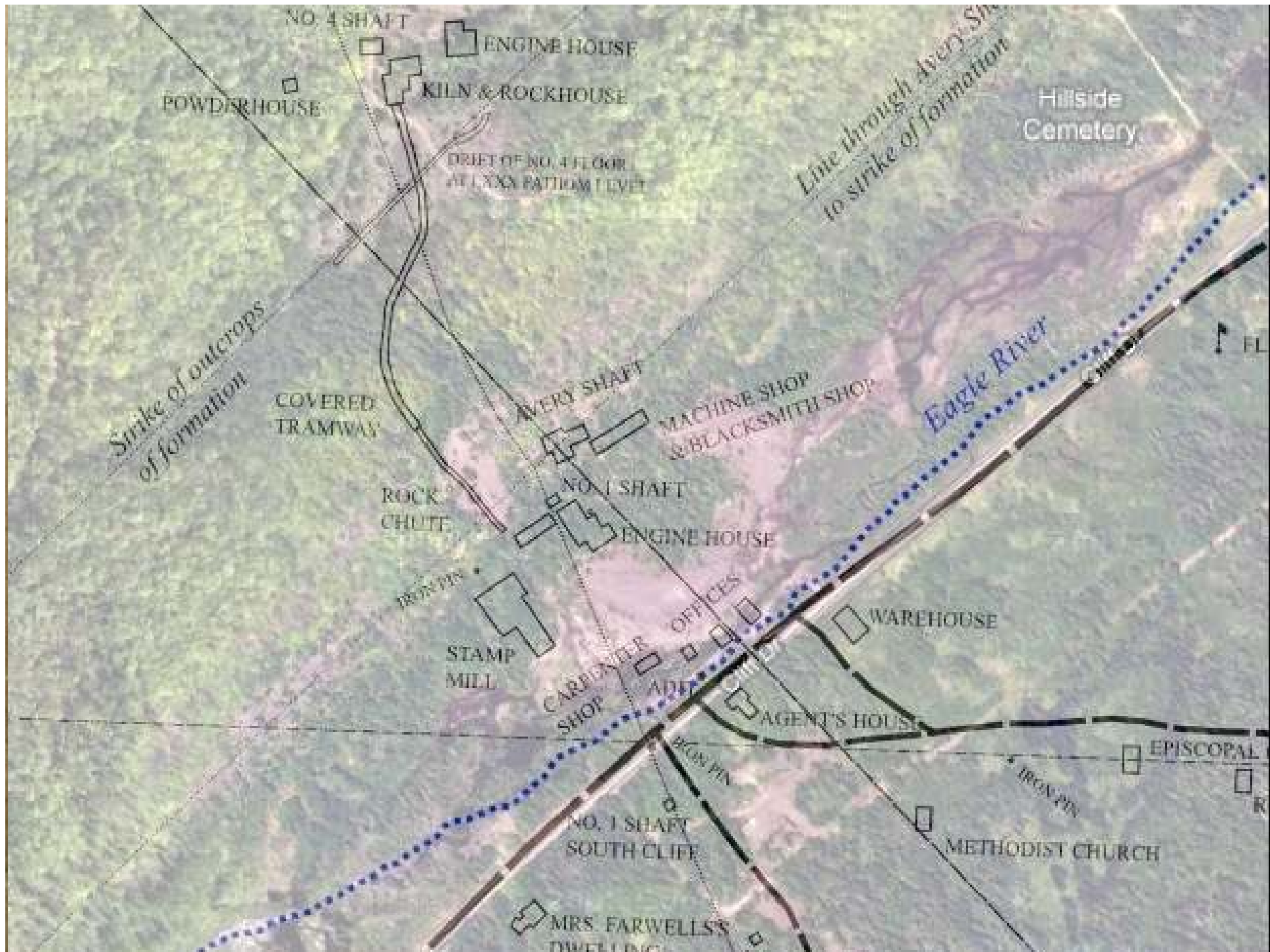


Cliff Mine Today

Google

20





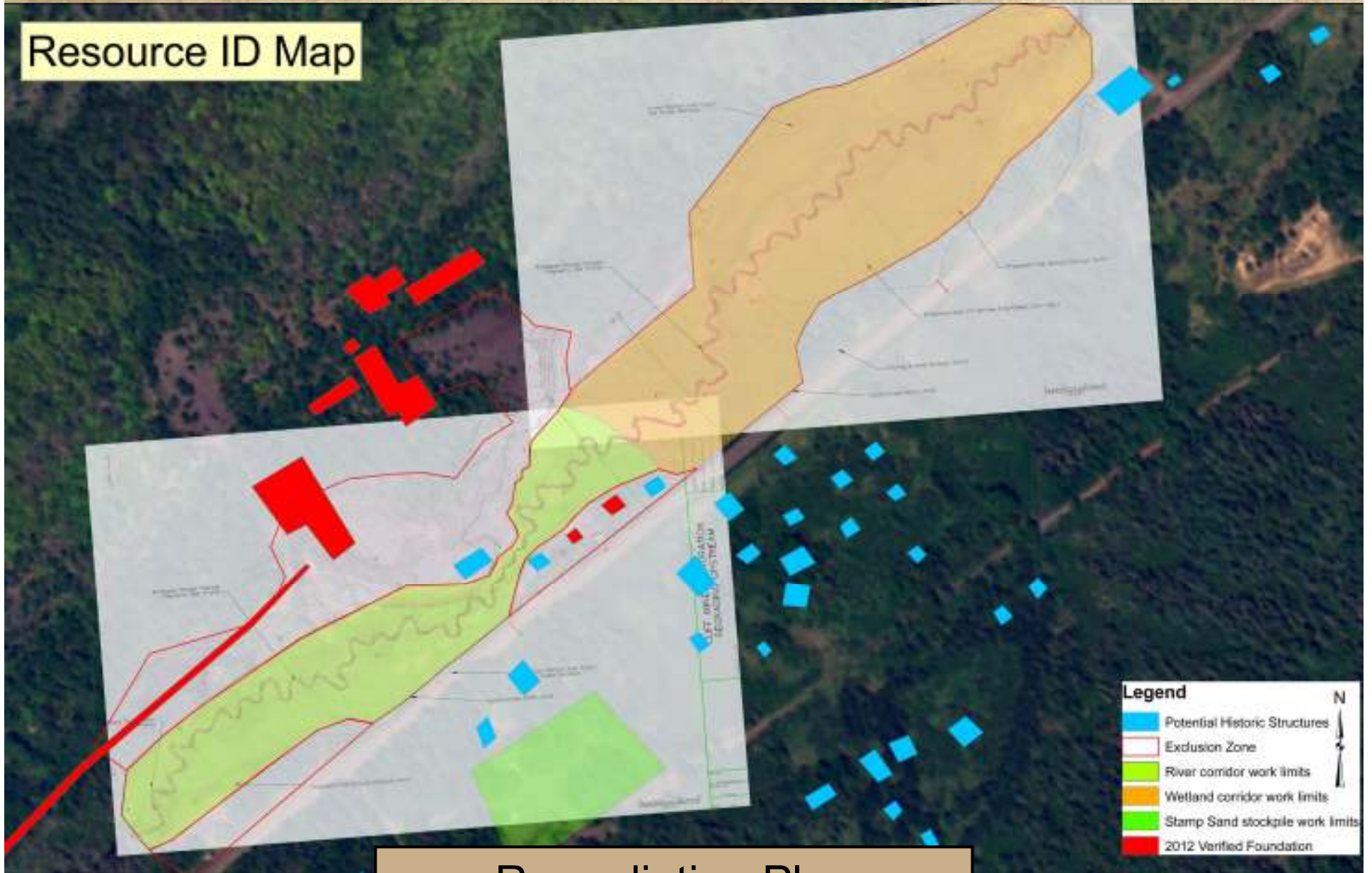


Cliff Mine Today



Cliff Mill Stamp Sands

# Resource ID Map



# Remediation Plan





Stamp Sand Remediation



Resource Avoidance



# CLIFF MINE SUMMARY



- ONE MAJOR ENTITY DRIVING THE PROJECT
- COLLABORATIVE PLANNING
- BALANCED RESULT

# THANK YOU



# Conceptual Site Plan

Quincy Smelting Works  
Houghton County, Michigan

