

March 15-16, 2022

Lansing Center

CAP CON 2022



SCENARIO-BASED EXERCISE

A group activity facilitated by Mike Loper and Jack Blanchard

Exercise Objectives

Based on realistic, plausible, and challenging severe weather scenario encourage group discussion concerning:

- **Disaster response and recovery roles, responsibilities, and decision-making.**
- **Local responders and mutual aid utilizing the Incident Command System (ICS) in accordance with the National Incident Management System (NIMS).**
- **Interface between local officials and the Emergency Operations Center (EOC).**
- **Plans for conducting damage assessment and handling debris management.**
- **Plans for ensuring public health, safety, and welfare for people with disabilities and others with access and functional needs.**
- **Plans for municipal government continuity of operations (COOP) and community resiliency / recovery.**







Scenario Build-Up

It is a weekday morning, normal business day, in late spring / early summer.

There are activities (sports, music, festival) scheduled for the late afternoon / early evening at local parks and recreation facilities or schools. *(If your jurisdiction does not have organized activities at parks and recreation facilities or a high school with sports fields, your city-village-township has a council, board, or commission meeting scheduled for this evening)*

The National Weather Service (NWS) has shared that your county / area is within an **Enhanced (3-orange) risk for potential severe weather. The local TV / radio meteorologists are forecasting a likeliness of storms developing this afternoon or evening.**

Understanding Severe Thunderstorm Risk Categories

THUNDERSTORMS (no label)	1 - MARGINAL (MRGL)	2 - SLIGHT (SLGT)	3 - ENHANCED (ENH)	4 - MODERATE (MDT)	5 - HIGH (HIGH)
No severe* thunderstorms expected	Isolated severe thunderstorms possible	Scattered severe storms possible	Numerous severe storms possible	Widespread severe storms likely	Widespread severe storms expected
Lightning/flooding threats exist with <u>all</u> thunderstorms	Limited in duration and/or coverage and/or intensity	Short-lived and/or not widespread, isolated intense storms possible	More persistent and/or widespread, a few intense	Long-lived, widespread and intense	Long-lived, very widespread and particularly intense
					
<ul style="list-style-type: none"> • Winds to 40 mph • Small hail 	<ul style="list-style-type: none"> • Winds 40-60 mph • Hail up to 1" • Low tornado risk 	<ul style="list-style-type: none"> • One or two tornadoes • Reports of strong winds/wind damage • Hail ~1", isolated 2" 	<ul style="list-style-type: none"> • A few tornadoes • Several reports of wind damage • Damaging hail, 1 - 2" 	<ul style="list-style-type: none"> • Strong tornadoes • Widespread wind damage • Destructive hail, 2" + 	<ul style="list-style-type: none"> • Tornado outbreak • Derecho

* NWS defines a severe thunderstorm as measured wind gusts to at least 58 mph, and/or hail to at least one inch in diameter, and/or a tornado. All thunderstorm categories imply lightning and the potential for flooding. Categories are also tied to the probability of a severe weather event within 25 miles of your location.



National Weather Service

www.spc.noaa.gov



Scenario Build-Up (continued)

The NWS has issued a **TORNADO WATCH** for your county in effect from 3:00 PM to 9:00 PM. Many counties in your area are under this watch.

The NWS has issued a **SEVERE THUNDERSTORM WARNING** for your county in effect from 5:45 PM to 7:00 PM. There is a storm moving east with heavy rain, possible hail, potential damaging winds in excess of 60 mph, and possibility of an isolated tornado. Your city-village-township is within the path of this storm.

Initial Discussion Points

- What communications may occur (information sharing)?
- What actions are taking (initial decision making)?
- Are any personnel / resources held over or placed on stand-by?
- Are any outdoor activities cancelled / postponed?

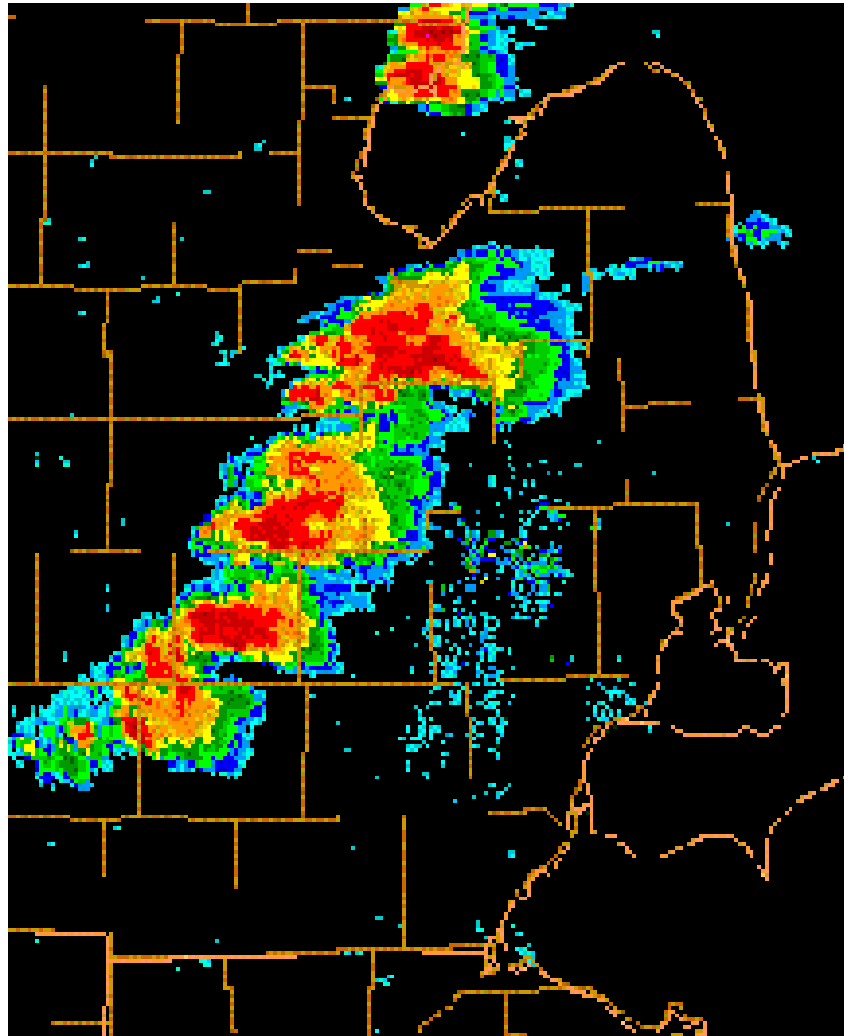
Scenario Build-Up (continued)

The NWS has now issued a **TORNADO WARNING** for your county in effect from 6:05 PM to 7:00 PM.

There are radar indications of rotation within the storm and likely developing tornadoes. There are reports of a funnel cloud and ground contact.

Warning sirens are activated. Other alerting systems are being use as well.





Tornadoes can last anywhere from several seconds to over an hour. The average is ten minutes.

When a tornado warning is issued you typically have about 15 minutes to take cover.

Flying debris is the greatest danger in tornadoes. Store protective coverings in or next to your shelter space.

Take cover in a lowest area of your home or in a storm shelter.

TORNADOES STRENGTH RATE

ENHANCED FUJITA SCALE

EF0	EF1	EF2	EF3	EF4	EF5
WEAK	MODERATE	STRONG	SEVERE	DEVASTATING	INCREDIBLE
65 to 85 mph	86 to 110 mph	111 to 135 mph	136 to 165 mph	166 to 200 mph	>200 mph
minor or no damage	moderate damage	considerable damage	severe damage	extreme damage	total destruction of buildings

BASE SCENARIO

At 6:32 PM, an **EF-3 TORNADO** and severe thunderstorm with straight-line winds in excess of 70 mph have struck your community. Your city-village-township has extensive damage and impact. Your neighboring community has some damage and impact as well.

There are damaged and destroyed homes and businesses, tree and other debris blocking several streets and roads, and power is out in much of the community. There are numerous injuries and people missing. 9-1-1 is overwhelmed. The local hospital (or medical center) is busy.

Specifically: City-Village-Township hall and a nursing home (long-term care or assisted living facility) has minor damage and no power. The local high school has minor damage and no power.

Discussion Points

- Priorities for your first responders (911, police, fire-rescue, public works)?
- Do you have mutual aid agreements (does your FD, PD, DPW)?
- Does your municipality have an Emergency Operations Plan (EOP)?
- Does your municipality have a Support Plan to the County EOP?
- Do you (your responders) utilize ICS / Unified Command?
- Do you activate a local EOC or coordinate with a county EOC?
- If needed, where is a local or American Red Cross shelter established?
- Generator back-up power for critical operations (municipal offices, high school, fire stations, police stations, PSAP / dispatch centers)?

Scenario Inject

There are several neighborhoods and a business district or shopping center with significant damage, downed wires, and scattered debris. This requires a perimeter be established and maintained, limited access control for safety, portable lighting, and security – overnight and through the next day.

There is a need for technical search and rescue (SAR), electrical power and gas utilities stabilization-repair and restoration, and establishment of a family assistance center / reunification center operation.

There is debris on public property as well as on private property.

The County and State EOCs are wanting **Initial Damage Assessment** information within 72 hours of the declared State of Emergency. Expect a possible **Joint Preliminary Damage Assessment (PDA)** with FEMA and the State within a week or so.

Discussion Points

- Do you declare a local State of Emergency?
- Does County declare a State of Emergency on your behalf?
- Are you familiar with the process for requesting assistance from the State?
- How are you handling initial Damage Assessment data collection?
- How are you handling initial Damage Assessment reporting to the county / state?
- Do you understand the difference between public assistance (PA) and individual assistance (IA)?
- How are you handling debris removal, collection, temporary storage?
- Do you have contracts, MOUs / MOAs?

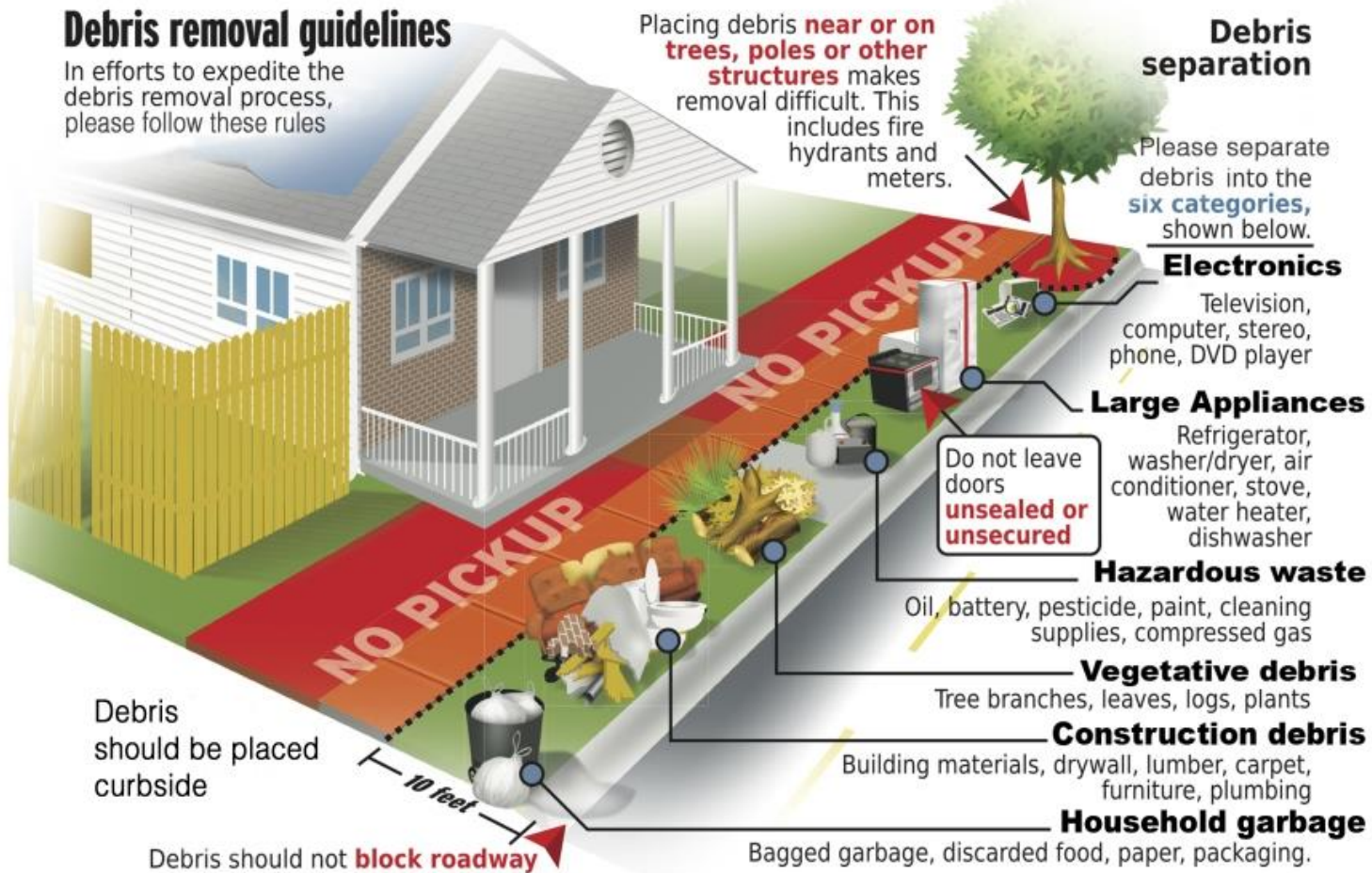


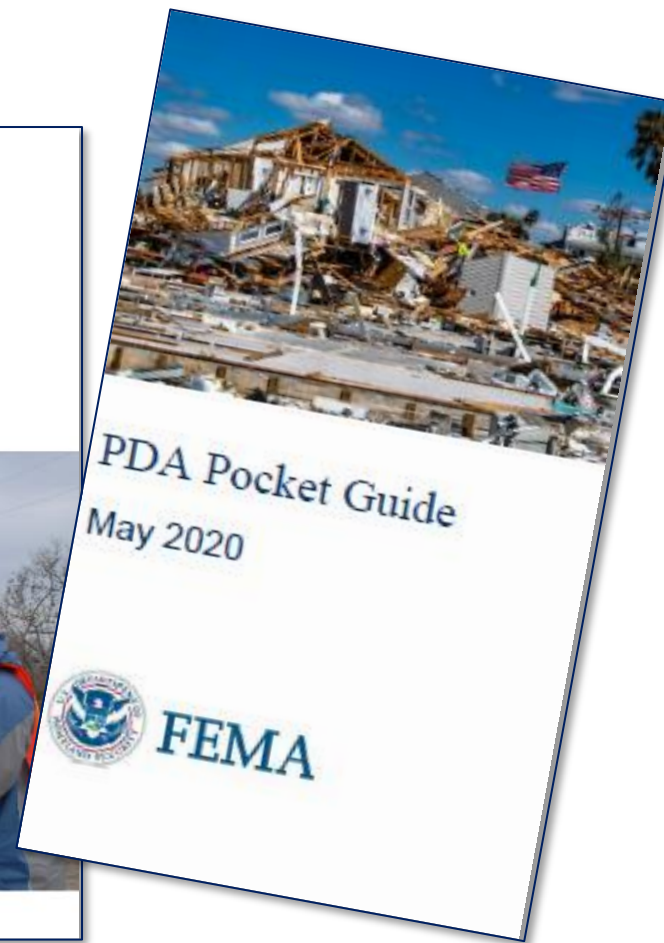
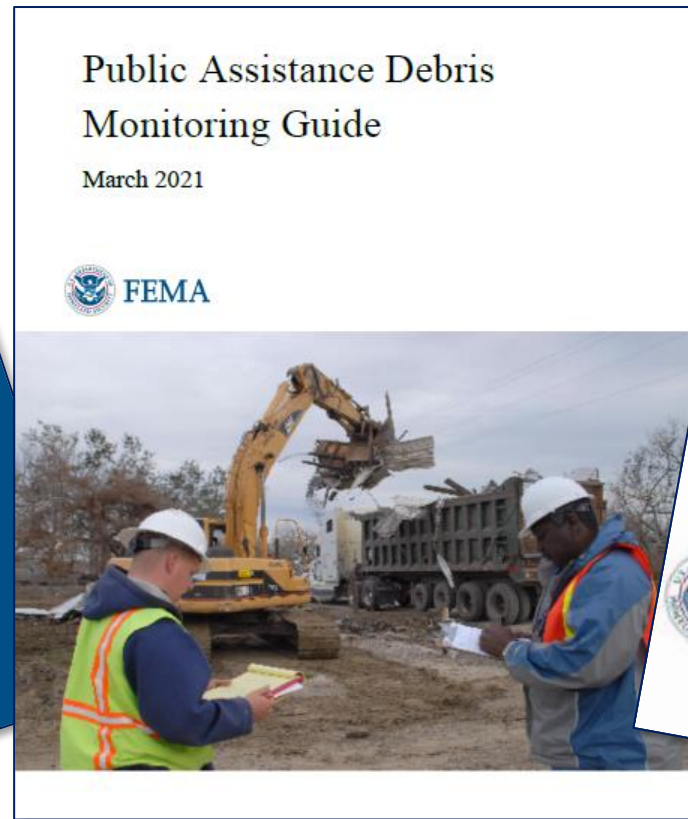
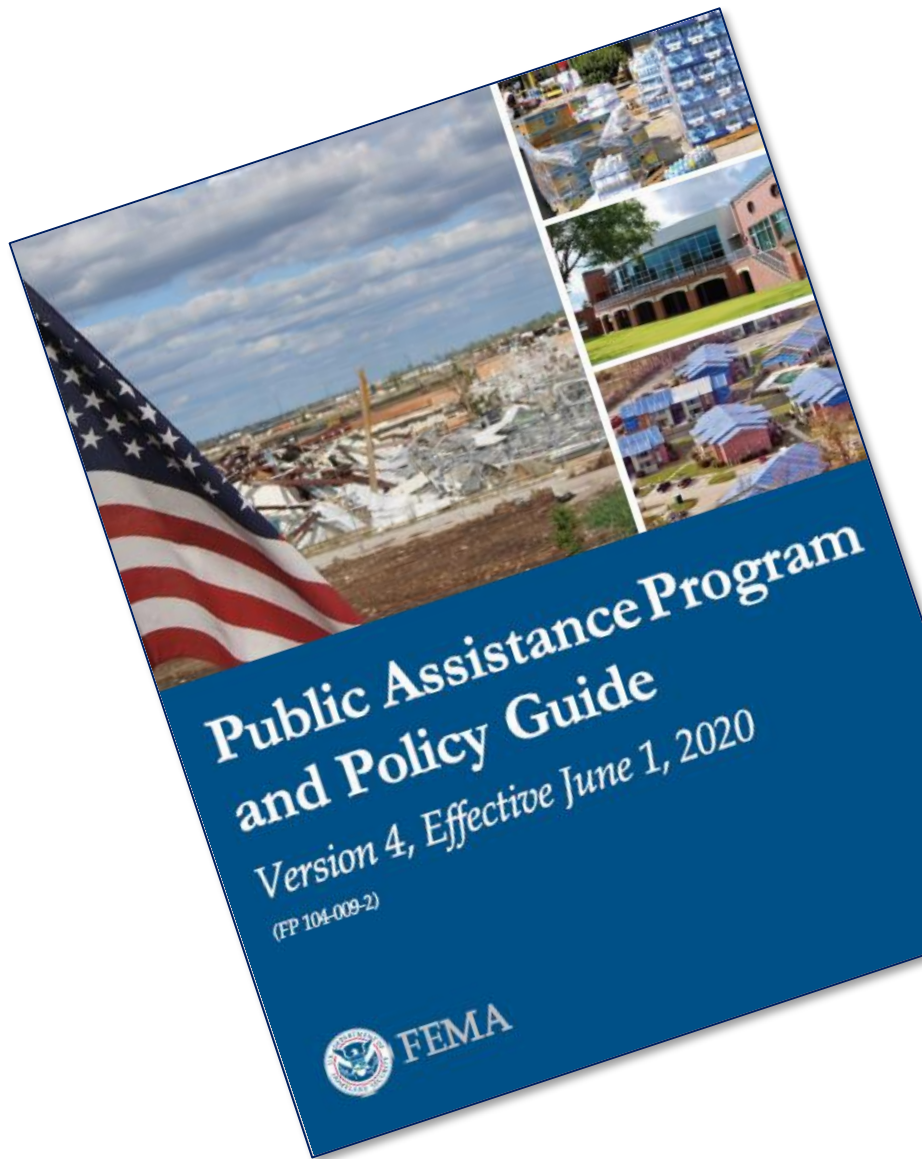
FEMA

www.fema.gov

Debris removal guidelines

In efforts to expedite the debris removal process, please follow these rules





March 15-16 | Lansing Center, MI



Scenario Update

The disaster response (especially emergency protective measures and debris removal, public safety, and public works staffing OT, contracted services) first week has been very expensive and overwhelming the annual budget. The process for seeking assistance (possible State or Federal Stafford Act or State relief \$ or grants) and recovering may take months or years.

Citizens (residents and business owners) are overwhelming the city-village-township leadership – expectations are high (often somewhat unrealistic). There is a need for handling the media – conducting press conferences (possible joint) and posting press releases and social media updates.

At least one employee was seriously injured (on-duty) while responding to the situation. Responders and staff may require crisis counseling.

Discussion Points

- Does your municipality have a Continuity of Operations (COOP) Plan?
- Finance / budget: tracking and processing expenditures, expecting 75% / 25% cost share.
- Human resources: union contracts, claims, essential personnel.
- Mental health: Critical Incident Stress Management (CISM).
- Short-term and long-term recovery issues, projects, and grants.

HOTWASH

After-Action Review

- Identify strengths (activity and lessons learned)
- Identify areas for improvement (activity and lessons learned)
- Feedback





Thank you for participating!

Mike Loper

Oakland County Emergency Management

Jack Blanchard

City of Berkley

March 15-16 | Lansing Center, MI

